

Remote Desktop Apps for Non-Academy Devices – MacOS

How To Guide



LANDAU
FORTE
ACADEMY
QEMS



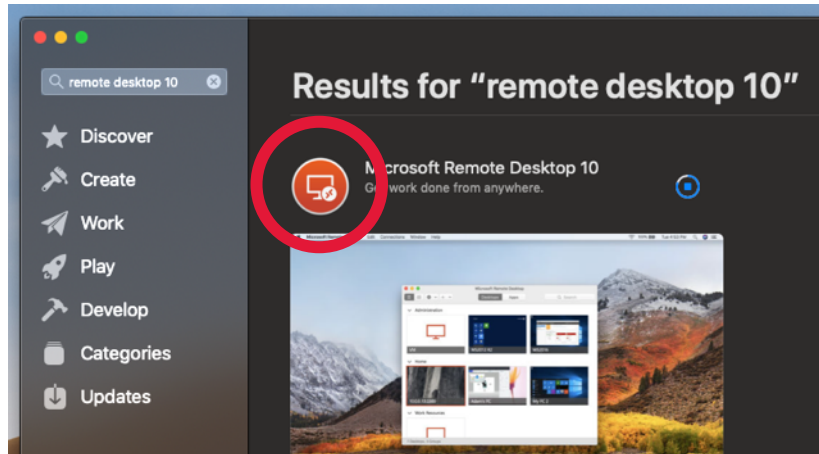
LANDAU
FORTE
ACADEMY
TAMWORTH
SIXTH FORM

Remote Desktop Apps for MacOS

Initial Setup

1. Open the App Store app, search for **remote desktop 10** and download the free app.

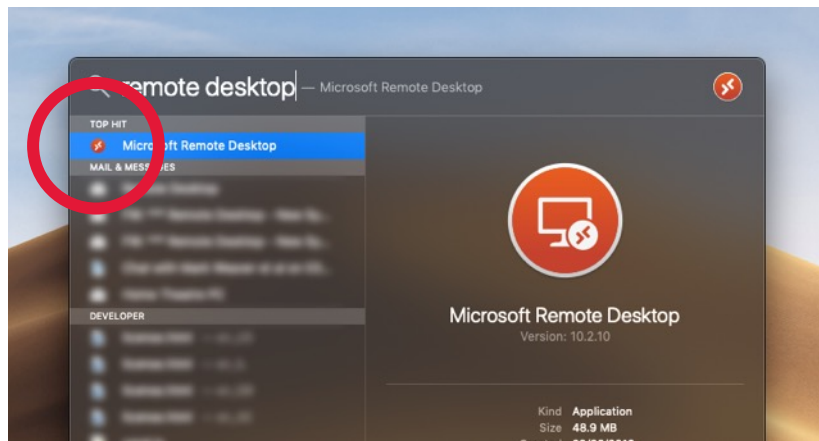
PLEASE NOTE: You *must* download **version 10** of the app (round logo).



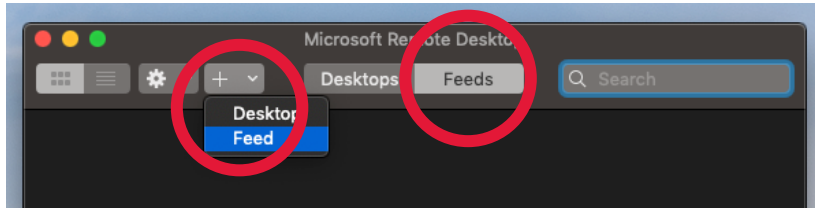
2. Open Spotlight Search by clicking the magnifying glass on the Menu Bar or by pressing **⌘cmd + Space Bar** on your keyboard.



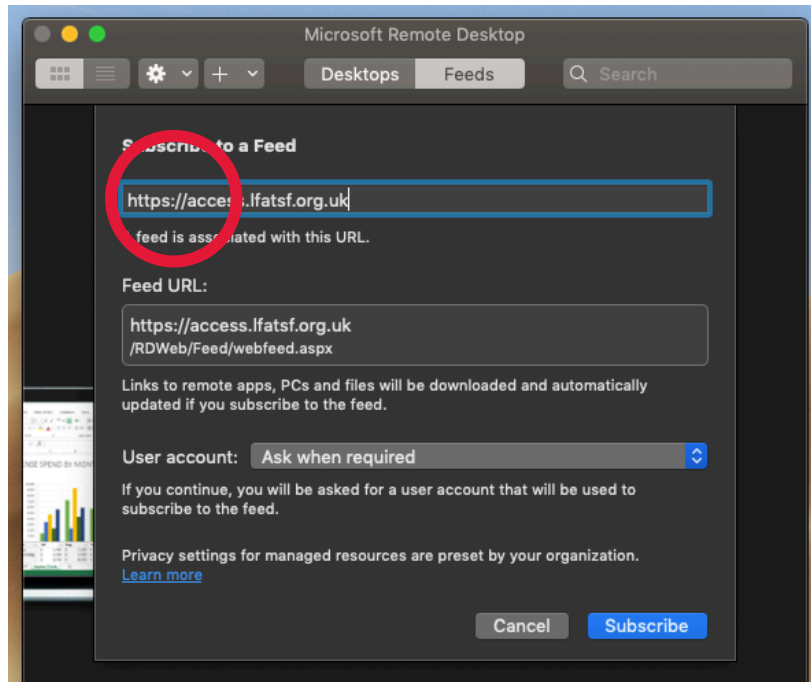
3. Type **remote desktop** in the search box and click on the Microsoft Remote Desktop app.



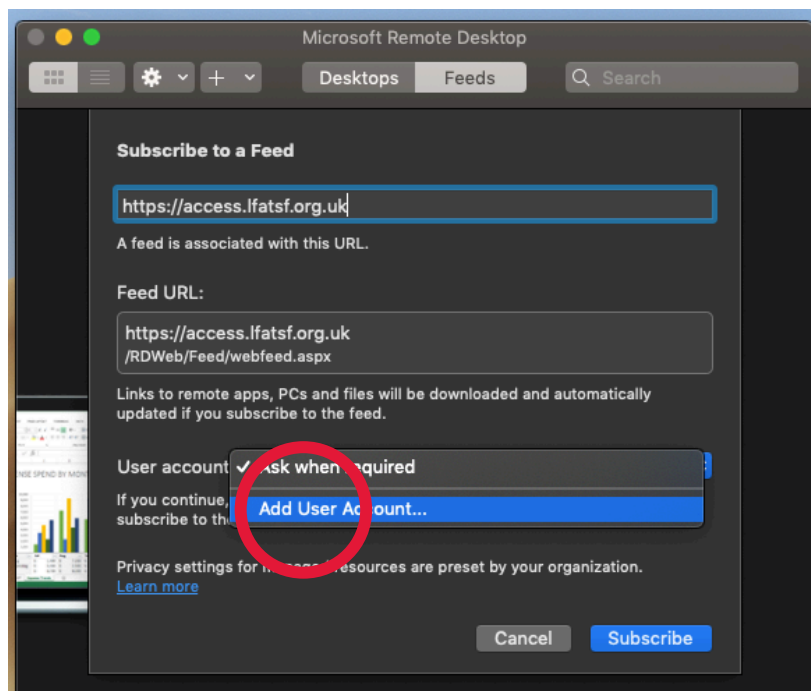
4. Click the **Feeds** tab then click the **+** button and select **Feed**.



5. Type the following address into the textbox that appears:
https://access.lfatsf.org.uk

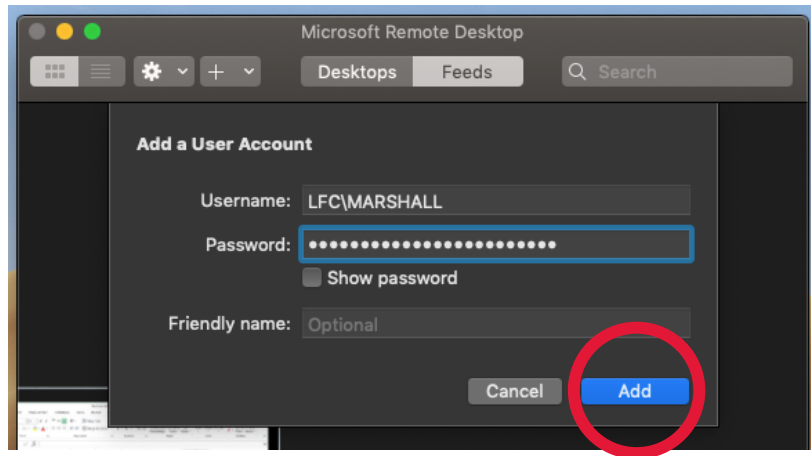


6. Click the **User Account** dropdown menu button and select **Add User Account...**



-
7. When prompted enter your Academy username in the following format: **LFC\USERNAME**
Then enter your Academy password and click the **Add** button.

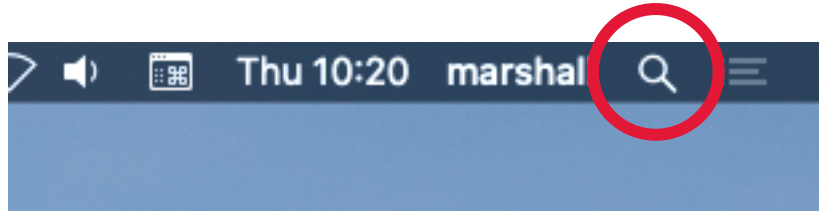
PLEASE NOTE: You *must* include the **LFC** prefix before your username.



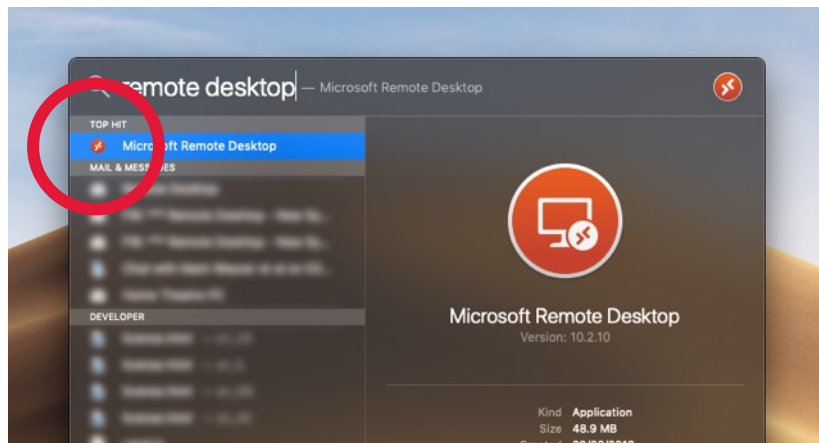
8. You are now able to use the Remote Desktop apps.

Using the Remote Desktop app

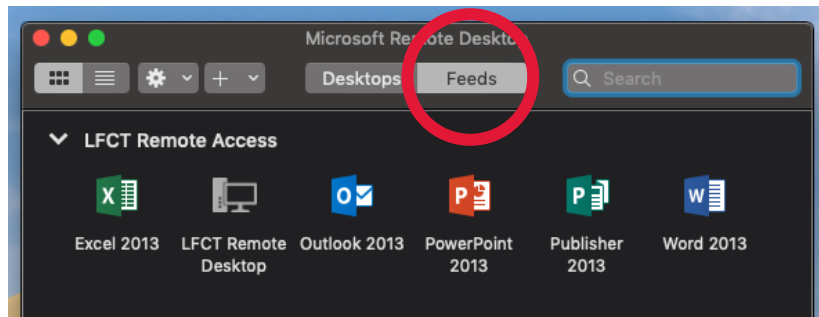
1. Open Spotlight Search by clicking the magnifying glass on the Menu Bar or by pressing **⌘cmd + Space Bar** on your keyboard.



2. Type **remote desktop** in the search box and click on the Microsoft Remote Desktop app.



3. Click the **Feeds** tab to view the apps available to you.



4. Double click any of the apps to launch them or double click **LFCT Remote Desktop** for the full Remote Desktop experience.