



2024

PROSPECTUS



JUMPING INTO OUR SIXTH FORM INDUCTION DAY



WELCOME FROM OUR PRINCIPAL

Welcome to Landau Forte Tamworth Sixth Form and thank you for expressing an interest in our Academy.

As Principal at Tamworth Sixth Form I am very proud of our academy, the achievements of our students and their contribution to our wider community. Our high expectations together with high aspirations and ambitions for every student is at the heart of what we do.

Our broad range of courses, enrichment opportunities and pastoral support ensures that our students can access the brightest futures. We want every student within our care to achieve their highest potential so they can enter higher education, higher level apprenticeships or the world of work.

We are looking forward to working alongside you as you embark on this exciting stage of your learning.

MRS KATIE ADAMS
*Principal of Landau Forte
Tamworth Sixth Form*



OUR SIXTH FORM

”

Our broad and dynamic curriculum ensured that our vocational grades were even more successful, with the **average grade of a Distinction-**, an equivalent of an A-.

70%

of our students achieved an A* - C in 2023

40%

of our students achieving an A* - B in 2023





I am incredibly honoured to be the Director of Sixth Form at such a vibrant, successful and popular Sixth Form. We are the centre of our community and hold this responsibility at the core of everything that we do. Our Sixth Form is one that can celebrate strong academic outcomes with an unrivalled support network for our students. The reasons to join us are clear.

Whilst results nationally last year were suppressed to pre-pandemic levels, ours remained strong and significantly ahead of the previous benchmark of 2019. Just over 40% of our students achieved a grade A* - B and 70% achieved an A* - C in their A-Levels. Our broad and dynamic curriculum ensured that our vocational grades were even more successful, with the average grade of a Distinction-, an equivalent of an A-.

For September 2024, we are offering 21 A-Level courses, 12 vocational courses and two T-Levels, which are in Business & Administration and Education & Childcare. These T-Levels offer a mix between academic excellence and the hands-on application of this theory within the workplace. Together, with a strong network of local employers, we are able to offer our students relevant and meaningful work placements that support students' academic outcomes, next steps and aspirations.

Our academic successes are clear and our growing student population is testament to this. However, at Tamworth Sixth Form we believe that there is much more to post-16 education than simply academic outcomes and the Tamworth Sixth Form Charter is proof of this. You can read more about this, and the work that we do to ensure students leave us fully prepared for their next steps, in later pages in this prospectus.

Tamworth Sixth Form has something to offer everyone. Our wide range of courses, unparalleled personal development programme and bespoke pastoral support ensures that students who join us are supported in achieving their aspirations.

Thank you for considering Tamworth Sixth Form for your post-16 education. If you have any questions or would like to visit to see us in action, please contact us on post@lfatsf.org.uk or on the Sixth Form's main number 01827 301820.

MR MATT CAVANAGH

Director of Sixth Form



COURSES AND ENTRY REQUIREMENTS

All courses at Level 3 have been assigned a set of entry criteria, which are outlined below. In order to identify suitable courses you will need to calculate your average GCSE point score. These have been set in line with national averages where students go on to achieve positive outcomes for the subject.

CALCULATING YOUR GCSE POINTS

To calculate your GCSE average point score add the corresponding points (grades) together and divide by the number of subjects.

For students doing combined science you should treat each grade separately when calculating your average.

EXAMPLE

Our student below studied 9 GCSE subjects and their GCSE grades add up to 49. So their average is 5.44.

STUDENT'S GCSE GRADE

Maths	7
English Lang	5
English Lit	4
Physics	5
Biology	4
Chemistry	5
History	6
Art	6
French	7
TOTAL	49

CALCULATION

$$49 \div 9$$

5.44

A-LEVEL COURSES		
SUBJECT	REQUIRED	SPECIFIC REQUIREMENTS
Art	4.3	Minimum Grade 4 in English Language
Biology	5.7	Minimum Grade 5 in English Language, 6 in Maths and Science
Business Studies (A-Level)	4.9	Minimum Grade 5 in Maths, 4 in English Language
Chemistry	5.8	Minimum Grade 5 in English Language, 6 in Maths and Science
Computer Science	5.7	Minimum Grade 6 in Maths, 4 in English Language
Drama	4.3	Minimum Grade 4 in English Language
English Language	5.0	Minimum Grade 5 in English Language
English Literature	5.0	Minimum Grade 5 in English Literature
French	4.5	Minimum Grade 6 in French and 4 in English Language
Geography	4.5	Minimum Grade 5 in English Language, 4 in Maths
Government & Politics	4.5	Minimum Grade 5 in English Language
History	4.5	Minimum Grade 5 in English Language
Mathematics	5.4	Minimum Grade 6 in Maths, 4 in English Language
Music	4.3	Minimum Grade 4 in English Language
Philosophy, Religion & Ethics	4.5	Minimum Grade 4 in English Language
Photography	4.3	Minimum Grade 4 in English Language
Physics	5.8	Minimum Grade 5 in English Language, 6 in Maths and Science
Product Design	4.5	Minimum Grade 5 in Maths, 4 in English Language and Grade 5 in related subject at GCSE
Psychology	4.7	Minimum grade 5 in Maths, English Language and Science
Sociology	4.5	Minimum Grade 4 in English Language
Spanish	4.5	Minimum Grade 6 in Spanish and 4 in English Language

COURSES & ENTRY REQUIREMENTS

COURSES AND ENTRY REQUIREMENTS

VOCATIONAL COURSES		
SUBJECT	REQUIRED	SPECIFIC REQUIREMENTS
Business (applied)	4.0	Minimum Grade 4 in English or Maths
Creative Media	4.0	Minimum Grade 4 in English
Criminology	4.0	Minimum Grade 4 in English or Maths
Dance (Performing Arts)	4.0	Minimum Grade 4 in English or Maths
Health & Social Care	4.0	Minimum Grade 4 in English
ICT (applied)	4.0	Minimum Grade 4 in English or Maths
Law (applied)	4.5	Minimum Grade 4 in English
Science (applied)	4.5	Minimum Grade 4 in Science and a grade 4 in English and Maths
Sport (single award)	4.0	Minimum Grade 4 in English or Maths
Sport (double award)	4.0	Minimum Grade 4 in English or Maths
Travel & Tourism	4.0	Minimum Grade 4 in English or Maths
T-LEVEL COURSES		
SUBJECT	REQUIRED	SPECIFIC REQUIREMENTS
Business & Administration	4.8	Minimum Grade 5 in English and Maths
Education & Childcare	4.8	Minimum Grade 5 in English and Maths and a 4 in Science
GCSE MATHS OR ENGLISH RESIT		

COURSES & ENTRY REQUIREMENTS

GCSE MATHS OR ENGLISH RESIT: If you do not achieve a '4' in Maths or English Language, then you are legally required to re-sit this. We are able to support students with a GCSE re-sit in either English Language or Maths as long as they achieved a 3 in the subject that they are required to re-sit. Unfortunately, we cannot offer re-sits for both English Language and Maths

CALCULATING YOUR BTEC/TECH AWARD POINT SCORES

To calculate your BTEC/Tech Award average point score, use the table below to convert your grade to points, add the corresponding points together with your GCSE grades and divide by the number of total subjects you studied.

For students doing combined science you should treat each grade separately when calculating your average.

BTECH/TECH AWARD	POINTS
Level 2 Distinction*	8.5
Level 2 Distinction	7
Level 2 Merit	5.5
Level 2 Pass	4
Level 1 Distinction	3
Level 1 Merit	2
Level 1 Pass	1

STUDENT'S BTEC POINTS

Maths	3
English Lang	6
English Lit	5
Physics	3
Biology	4
Geography	4
BTEC Sport	4
Food & Nutrition	4
BTEC Sport	4
TOTAL	37

CALCULATION

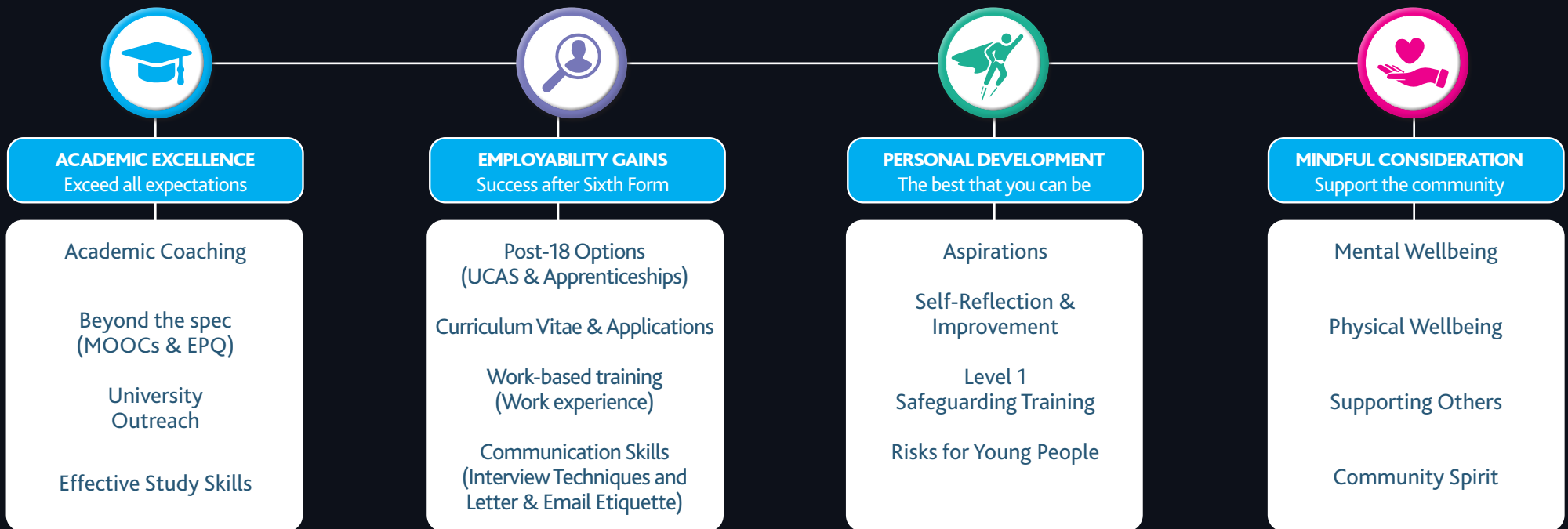
$$37 \div 9$$

4.1

OUR SIXTH FORM PATHWAYS



OUR SIXTH FORM CHARTER



LIFE SKILLS

Preparation for life

Personal financial awareness (including student loans, budgeting, credit cards, loans, mortgages, interest rates, paying tax, buying a car), CPR, sign language, cooking nutritious meals, driving theory, basic/advanced swimming, development of gym routines, basic car mechanics, telephone confidence and presenting.

A-LEVEL COURSES

12 | Art

13 | Biology

14 | Business Studies (A-Level)

15 | Chemistry

16 | Computer Science

17 | Drama

18 | English Language

19 | English Literature

20 | French

21 | Geography

22 | Government & Politics

23 | History

24 | Mathematics

25 | Music

26 | Philosophy, Religion & Ethics

27 | Photography

28 | Physics

29 | Product Design

30 | Psychology

31 | Sociology

32 | Spanish



COURSE IS EQUIVALENT TO
One A Level

COURSE TITLE
A-Level Art (Fine Art)

EXAM BOARD
OCR

Why Should I Study Art?

“Creativity is allowing yourself to make mistakes: Art is knowing which ones to keep!”

Scott Young 1957

Fine Art teaches students to look, think, reflect and develop personal ideas, both personal and universal and explore these in depth.

Those who study art are in great demand in the work place as the creativity, flexibility and communication skills necessary to be good artist are the skills needed to be successful in this ever changing world.

WHAT SKILLS CAN I GAIN?

Technical skills in a range of processes and techniques. Students gain analytical, personal reflection, and project management skills in terms of meeting deadlines and setting routes of exploration and inquiry.

WHAT CAREER PATHS WOULD THIS COURSE BE SUITABLE FOR??

Architecture, Education, Advertising, Media, Design, Marketing, Fashion, Publishing, Film and TV, Museums and galleries, Freelance Professional Artist, Graphic Designer, Animator, Illustrator, Comic Book Artist, Game Designer.

HOW WILL I BE ASSESSED?

Year 1: Component 01: Personal investigation (60%)
Learners should produce two elements:

- (i) a portfolio of practical work showing their personal response to either a starting point, brief, scenario or stimulus, devised and provided by the learner or centre.
- (ii) a related study: an extended response of a guided minimum of one thousand words. This portfolio will consist of a number of projects aimed at increasing a learner's independence and originality by developing personal ideas and concepts, and exploring and developing skills in Fine Art disciplines.

Year 2: Component 02: Externally set task (40%)

The early release paper will be issued on 1 February and will provide learners with a number of themes, each with a range of written and visual starting points, briefs and stimuli. A creative and imaginative response should be based on one of these options.

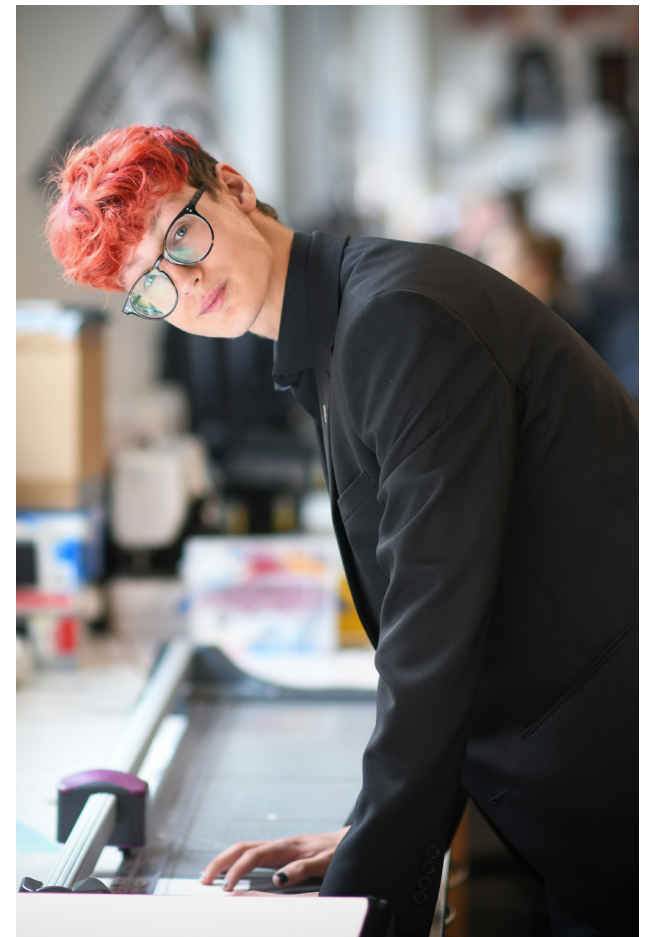
WHAT ARE THE ENTRY REQUIREMENTS?

REQUIRED APS
4.3



SPECIFIC REQUIREMENTS

Minimum Grade 4 in English Language



WHAT SKILLS CAN I GAIN?

You will develop a range of skills including the ability to analyse, interpret and evaluate scientific data. You will also gain skills in designing scientific investigations taking into account factors such as ensuring variables are controlled in experiment and that the data is collected is reliable. You will also gain skills in using laboratory equipment such as using light microscopes and colorimeters.

WHAT CAREER PATHS WOULD THIS COURSE BE SUITABLE FOR?

By studying A-Level Biology it will open up the possibility of studying a range of degree courses at university including medicine, forensics science and biomedical science. It will also give students that opportunity to undertake biology based apprenticeships.

WHAT WILL I LEARN WHILST STUDYING?

Students who study biology at A-Level learn the fundamentals of the cell, biochemistry, ecology, physiology and other key elements of subject so that they can go on to study subjects at degree level. Topics students will cover during the course include:

- Biological molecules
- Cells
- Genes and gene expression
- Homeostasis
- Bioenergetics
- Ecology

HOW WILL I BE ASSESSED?

At the end of the 2 year course you will be assessed by completing 3 examination papers, paper 1, paper 2 and paper 3. The combined mark for these 3 examination papers will determine your overall grade.

WHAT ARE THE ENTRY REQUIREMENTS?

REQUIRED APS

5.7



SPECIFIC REQUIREMENTS

Minimum Grade 5 in English Language,
Minimum Grade 6 in Maths and Science



COURSE IS EQUIVALENT TO
One A Level

COURSE TITLE
A-Level Biology

EXAM BOARD
AQA



Why Should I Study Biology?

Biology is a fascinating subject, the study of which will see you learn about the natural world and all the living things within it. Gaining an A-level in this subject opens up a vast range of opportunities for both university degrees and career options, many of which can take you all around the world.

Biology is the study of living organisms and the biological mechanisms which occur in these living organism to sustain life. This includes the structure and function of biological molecules, the structure of cells and the function of the organelles within them and the study of processes which sustain life such as respiration and photosynthesis. Therefore, if you are interested in finding out what sustains life then A-Level Biology is for you!

COURSE IS EQUIVALENT TO
One A Level

COURSE TITLE
A-Level Business Studies

EXAM BOARD
OCR

Why Should I Study Business Studies?

This course is designed to:

- Gain a holistic understanding of business.
- Develop a critical understanding of organisations and their ability to meet society's needs and wants.
- Understand that business behaviour can be studied from a range of perspectives.
- Generate enterprising and creative solutions to business problems and issues.
- Be aware of the ethical dilemmas and responsibilities faced by organisations and individuals.
- Acquire a range of relevant business and generic skills, including decision making and problem solving.

WHAT SKILLS CAN I GAIN?

This course allows you to develop your knowledge and understanding of key business theories and concepts. In addition, you will develop your skills of analysis and evaluation, which will equip you for your examinations at the end of your chosen course.

WHAT CAREER PATHS WOULD THIS COURSE BE SUITABLE FOR?

The course opens up a wide variety of options in Higher Education, including: Business, Economics, Accounting and Finance, Management, Logistics, HR, International/European Business, Law, Information Systems with Business.

It also offers a credible route into degree level apprenticeships, employment and training.

WHAT WILL I LEARN WHILST STUDYING?

During this course, students will study: Business objectives and strategic decisions, external influences facing businesses, marketing and marketing strategies, operational strategy, human resources, accounting and financial considerations, the global environment of business.

HOW WILL I BE ASSESSED?

Paper 1: Operating in a local business environment.

Paper 2: The UK Business Environment.

Paper 3: The Global Business Environment.

All papers are synoptic, 2 hours in duration, 80 marks and are 33% of the total A level.

WHAT ARE THE ENTRY REQUIREMENTS?

REQUIRED APS

4.9



SPECIFIC REQUIREMENTS

Minimum Grade 5 in Maths

Minimum Grade 4 in English Language



WHAT SKILLS CAN I GAIN?

You will develop a range of skills including the ability to analyse and interpret scientific data. You will also gain skills in designing scientific investigations taking into account factors such as ensuring variables are controlled in experiments and that the data is collected is reliable. You will also gain practical skills by carrying out a range of scientific experiments which will include titrations and chromatography.

WHAT CAREER PATHS WOULD THIS COURSE BE SUITABLE FOR?

By studying A-Level Chemistry it will open up the possibility of studying a range of degree courses at university including Medicine, Pharmacy, Dentistry as well as Chemistry and Biochemistry. It will also give you the opportunity to undertake Chemistry based apprenticeships. .

WHAT WILL I LEARN WHILST STUDYING?

The A-Level consists of the study of Physical, Inorganic and Organic Chemistry topics. In Physical Chemistry, you will study atomic structure, bonding, energetics and kinetics along with chemical calculations. These are some of the building blocks of chemistry. In Inorganic Chemistry, you will learn how to explain, and predict, the patterns in properties and reactivity that occur through the periodic table and some of the reactions of certain groups.

Organic Chemistry explores the world of carbon containing compounds, from simple molecules to the complex molecules of life

HOW WILL I BE ASSESSED?

At the end of the 2 year course you will be assessed by completing 3 examination papers, paper 1, paper 2 and paper 3. The combined mark for these 3 examination papers will determine your overall grade.

WHAT ARE THE ENTRY REQUIREMENTS?

REQUIRED APS

5.8



SPECIFIC REQUIREMENTS

Minimum Grade 5 in English Language,
Minimum Grade 6 in Maths and Science



COURSE IS EQUIVALENT TO
One A Level

COURSE TITLE
A-Level Chemistry

EXAM BOARD
AQA



Why Should I Study Chemistry?

No matter where you are, chemistry is around you. Every day, it affects what we see, hear, smell, taste, and touch. Learning chemistry will reveal a whole new understanding of how our world works. Anything that has matter breaks down into chemical building blocks.

A-Level Chemistry requires and develops higher level thinking skills and excellent analytical competence and is therefore a good course for university entrance and undertaking science related apprenticeships.

COMPUTER SCIENCE

COURSE IS EQUIVALENT TO
One A Level

COURSE TITLE
A-Level Computer Science

EXAM BOARD
AQA

Why Should I Study Computer Science?

Computer Science is a practical subject where students can apply the academic principles learned in the classroom to real-world systems. It's an intensely creative subject that combines invention and excitement, and can look at the natural world through a digital prism.

WHAT SKILLS CAN I GAIN?

You will gain an understanding and ability to apply the fundamental principles and concepts of computer science, including: abstraction, decomposition, logic, algorithms and data representation. You will also develop the ability to analyse problems in computational terms through practical experience of solving such problems, including writing programs to do so.

WHAT CAREER PATHS WOULD THIS COURSE BE SUITABLE FOR?

Computer Programmer, Machine Learning Engineer, CAD Designer, Data Scientist, Software Developer, Software Architect, Technical Author, Cyber security, Digital Marketing, 3D animator, Network architect, Network architect, Systems analyst, UX designer, VFX artist, Web designer, Web developer.

WHAT WILL I LEARN WHILST STUDYING?

The A-Level consists of the study of Physical, Inorganic and Organic Chemistry topics. In Physical Chemistry, you will study atomic structure, bonding, energetics and kinetics along with chemical calculations. These are some of the building blocks of chemistry. In Inorganic Chemistry, you will learn how to explain, and predict, the patterns in properties and reactivity that occur through the periodic table and some of the reactions of certain groups. Organic Chemistry explores the world of carbon containing compounds, from simple molecules to the complex molecules of life

HOW WILL I BE ASSESSED?

Paper One (40%) On-screen exam (2 hr 30 min).
Paper Two (40%) Written exam (2 hr 30 min).
Coursework Project (20%).

WHAT ARE THE ENTRY REQUIREMENTS?

REQUIRED APS

5.7



SPECIFIC REQUIREMENTS

Minimum Grade 6 in Maths
Minimum Grade 4 in English Language



WHAT SKILLS CAN I GAIN?

Lessons are a healthy combination of practical learning supported by the necessary academic theory needed to understand the work being studied. Learning takes place through the following: participation in the creation, development and performance of a piece of theatre based on a reinterpretation of an extract from a text.

The development of techniques and working methods of influential theatre practitioners and recognised theatre companies. The study and presentation of a variety of plays through participation in improvisation, devised work and class discussion. These methods increase understanding of the subject and provide more detail and substance to your work.

WHAT CAREER PATHS WOULD THIS COURSE BE SUITABLE FOR?

The course can lead you to studying drama at university, drama school or a Performing Arts course. Many students go on to study Drama and Theatre Studies/Performing Arts at a higher level and progress to working in theatre, television, film and video. It has also proved invaluable in the journalistic, teaching and legal professions.

WHAT WILL I LEARN WHILST STUDYING?

You will learn all about drama and theatre, develop an understanding of the practices used in twenty first century theatre making. Participate as a theatre maker and as an audience member in live theatre and learn to analyse and evaluate your own work and the work of others.

HOW WILL I BE ASSESSED?

Component 1: Theatre Workshop Non-exam assessment: internally assessed, externally moderated 20% of qualification – Learners can act OR design.

Component 2: Text in Action Non-exam assessment: externally assessed by a visiting examiner 40% of qualification.

Component 3: Text in Performance Written examination: 2 hours 30 minutes 40% of qualification.

WHAT ARE THE ENTRY REQUIREMENTS?

REQUIRED APS
4.3



SPECIFIC REQUIREMENTS

Minimum Grade 4 in English Language



COURSE IS EQUIVALENT TO
One A Level

COURSE TITLE
A-Level Drama

EXAM BOARD
Eduqas



Why Should I Study Drama?

Drama and Theatre Studies is a practical, intellectual and artistic subject. You will be expected to explore the structural elements of theatre from the page to the stage. In order to be successful and enjoy this subject, you will need to have a keen interest in the history of drama and study of practitioners, theatrical forms and conventions that make theatre such a compelling and exciting subject.

You must be able to analyse and critically deconstruct the work you study, create and witness. Current drama students have stated that they find A Level Drama challenging with an excellent mix of both practical and theory work.

COURSE IS EQUIVALENT TO
One A Level

COURSE TITLE
A-Level English Language

EXAM BOARD
AQA

Why Should I Study English Language?

English Language study at A-Level enables a broad and diverse exploration of the subject including study of individuals' use of language, society, methods of language analysis and children's language development.

Students will also study language discourses including language diversity and change. Students will also have the opportunity to explore and analyse language data independently and reflect upon their own writing expertise through their own language investigation.

WHAT SKILLS CAN I GAIN?

You will learn how to collect and analyse data methodically using academic practices. You will also learn how to analyse all aspects of spoken and written language in forensic detail. English Language study provides insights into politics, psychology and sociology, as well as, history. You will also learn how to write academically and gain a precise insight into the nuances of English grammar and its application in various contexts.

WHAT CAREER PATHS WOULD THIS COURSE BE SUITABLE FOR?

English Language study at A-Level provides a suitable basis for careers in journalism, law, politics, social research, teaching, the military, national and international intelligence and security roles, and public relations.

It also offers a credible route into employment and training.

WHAT WILL I LEARN WHILST STUDYING?

Studying English Language will enable you to build on your knowledge of words and grammar, as well as, the various contexts, audiences and purposes language relates to.

Furthermore, you will learn about the history of the language, how it has changed and developed over time and how the study of it can inform you about politics, psychology and sociology.

HOW WILL I BE ASSESSED?

You will be assessed through two examinations (both worth 40% of the course) and NEA (coursework worth 20% of the course).

WHAT ARE THE ENTRY REQUIREMENTS?

REQUIRED APS

5.0

SPECIFIC REQUIREMENTS

Minimum Grade 5 English Language



WHAT SKILLS CAN I GAIN?

In English Literature, you will learn how to formulate and articulate well researched and supported opinions.

You'll learn about logical fallacies and how to voice convincing arguments. Of course, your reading ability will be developed, as well as your vocabulary; however, crucially, you'll gain insights into the history of human civilisation through Literature and gain skills in discussing politics, sociology, philosophy and ethics too.

You will develop your critical thinking skills to a high level and learn to write academically at a high level. English Literature teaches you to challenge various perceptions of the world you live in including your own views.

WHAT CAREER PATHS WOULD THIS COURSE BE SUITABLE FOR?

The study of English Literature is well suited for pursuing careers in journalism, law, politics, social research, teaching, the military and public relations. English Literature provides a great basis for any career where you have to think critically and assimilate large quantities of information.

WHAT WILL I LEARN WHILST STUDYING?

In A-Level English Literature, you will learn close textual analysis skills, academic writing skills, critical thinking skills and various critical theories relating to psychoanalysis, Marxism, Feminism, Post-Colonialism, Modernism and Post-Modernism.

HOW WILL I BE ASSESSED?

You will be assessed through two examinations (both worth 40% of the course) and NEA (coursework worth 20% of the course).

WHAT ARE THE ENTRY REQUIREMENTS?

REQUIRED APS

5.0



SPECIFIC REQUIREMENTS

Minimum Grade 5 in English Literature



COURSE IS EQUIVALENT TO
One A Level

COURSE TITLE
A-Level English Literature

EXAM BOARD
AQA



Why Should I Study English Literature?

Studying English Literature enables you to explore the human experience through the study of literary texts. In English Literature, you'll critically analyse literary texts and gain insight into the realms of human faith, psychology and civilisation. The study of English Literature provides insights into critical moments in history including contemporary attitudes and beliefs.

In English Literature, you'll be introduced to a range of literary theory and criticism including psychoanalysis (study of the human mind), Marxism (the conflict between Capitalism and Socialism), Feminism (study of gender and power) and Post-Colonialism (study of how Western Europe dominated the writing of world history). English Literature study provides a portal through which you may challenge and interrogate the world you live in and the history which underpins it through the study of fiction. On this course, you'll be invited to share and develop your opinions based on evidence and research.

FRENCH

COURSE IS EQUIVALENT TO
One A Level

COURSE TITLE
A-Level French

EXAM BOARD
AQA

Why Should I Study French?

French is a popular modern foreign language where having a good working knowledge of it will open opportunities in a range of businesses and occupations.

Studying French will improve your accuracy in communication skills, as well as, your comprehension of complex information. Learning French will develop your cultural understanding too, as well as, develop your skills socially which is incredibly important for success in the wider world.

Having an A-Level in French is a very respected qualification which is sought after by universities and future employers.

WHAT SKILLS CAN I GAIN?

Enhanced reading, listening, speaking and writing skills; developed skills in social interaction and increased confidence. You'll gain a greater cultural understanding and insight into issues outside of the UK.

WHAT CAREER PATHS WOULD THIS COURSE BE SUITABLE FOR?

Journalism, law, civil service, intelligence services, interpreting and teaching

WHAT WILL I LEARN WHILST STUDYING?

You will learn how to understand, read, speak and write French at a higher level and even begin to read more complex French texts such as French Literature.

You will learn about French social issues and trends, political and artistic culture, as well as, undertake an individual research project. In the individual research project, you will identify a subject or a key question which is of interest to you and which relates to a country or countries where French is spoken. You will then select relevant information in French from a range of sources including the internet.

The aim of the research project is to develop research skills. You will demonstrate your ability to initiate and conduct individual research by analysing and summarising your findings, in order to present and discuss them in the speaking assessment.

HOW WILL I BE ASSESSED?

You will be assessed in three examinations: Paper 1: Listening, Reading and Writing; Paper 2: Writing; Paper 3: Speaking.

WHAT ARE THE ENTRY REQUIREMENTS?

REQUIRED APS

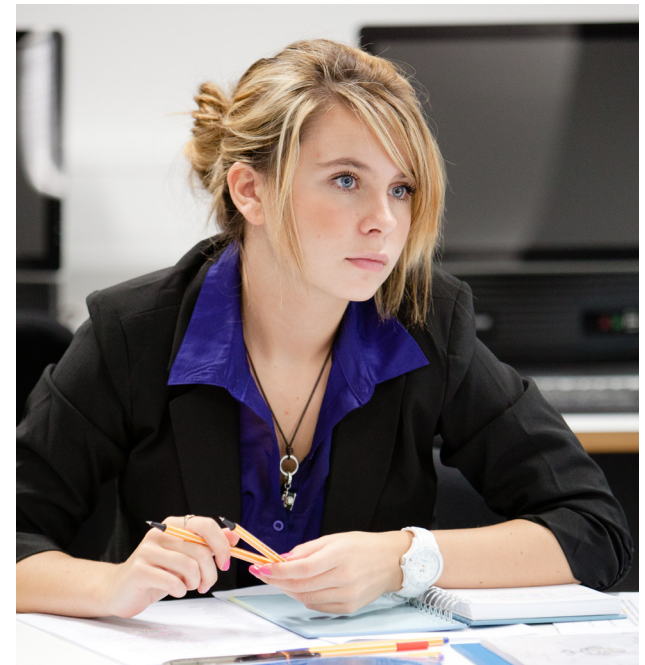
4.5



SPECIFIC REQUIREMENTS

Minimum Grade 6 in French

Minimum Grade 4 in English Language



WHAT SKILLS CAN I GAIN?

As Geography is such a wide-reaching subject, there are numerous skills you will develop when studying this course:

- Develop your qualitative and quantitative geographical skills
- Develop visual communication skills using maps, graphs, diagrams and images to problem solve
- Research questions, apply relevant techniques and skills, and find appropriate ways to analyse and communicate your findings.
- Enhance English skills, helping you to produce convincing arguments and to communicate ideas effectively.

WHAT CAREER PATHS WOULD THIS COURSE BE SUITABLE FOR?

Geography offers diverse career paths, from sustainability and urban renewal to global economics. In law, human rights, and international relations, it addresses key issues like development measurement and migration's societal impact. For future medicine or veterinary courses, geography enhances understanding of environment's health effects and writing skills.

WHAT WILL I LEARN WHILST STUDYING?

A-Level Geography consists of three key areas

- Physical Geography – Water and Carbon Cycles, Coastal Landscapes and Hazards
- Human Geography - Global Systems and Governance, Changing Places, Population & the Environment.
- Non-examination Assessment

HOW WILL I BE ASSESSED?

You will have 2 examinations at the end of year 13. Each examination is worth 40% of the overall grade

Paper 1 – Physical paper based on the physical topics – worth 40% of overall grade.

Paper 2 – Human paper based on the human topics – worth 40% of overall grade.

The final 20% of the overall grade is based on the Non- examination Assessment.

WHAT ARE THE ENTRY REQUIREMENTS?

REQUIRED APS

4.5



SPECIFIC REQUIREMENTS

Minimum Grade 5 in English Language, 4 in Maths



COURSE IS EQUIVALENT TO
One A Level

COURSE TITLE
A-Level Geography

EXAM BOARD
AQA



Why Should I Study Geography?

Geography is a multi-disciplinary subject which enables you to question the world in which we live. Geography is a broad based academic subject which will open up options for you in your future. Employers and universities see geography as a robust academic subject rich in skills, knowledge and understanding. As a subject linking the arts and the sciences it is highly flexible in terms of what you can combine it with, both at GCSE and A Level. If you choose to take geography on to university there are literally hundreds of courses to choose from, which can lead to a surprising range of career options.

Geography will challenge your perceptions and stimulate your investigative and analytical skills. The course reflects the issues we face in the world today as well as issues in the future, it also allows us to develop innovations to solve those issues and make a better future for the next generation. There are also many opportunities to test and observe the theory in practice with at least 4 days out in the field.

GOVERNMENT & POLITICS

COURSE IS EQUIVALENT TO
One A Level

COURSE TITLE
A-Level Government & Politics

EXAM BOARD
AQA

**Why Should I Study Government
& Politics?**

Do you get angry about tuition fees? Are you upset by MPs' expenses and angry because there are cuts in public services?

Do you want to do something about it or simply want to know more about how the country is run? If you do, then Government and Politics is the course for you.

Do you like a good debate about politics and enjoy sharing your opinions and using evidence from around you?

These are the skills you will develop during your A Level Government and Politics; they are all skills that employers want, and skills, which are desirable in the modern world, whether or not you go into politics.

WHAT SKILLS CAN I GAIN?

You will develop a broad knowledge and understanding of the political system of the UK, including the local and European Union (EU) dimensions. You will develop their capacity for critical thinking, to see relationships between different aspects of government and politics and to perceive their field of study in a broader perspective, including some comparisons with other political systems.

You will develop knowledge and understanding of relevant political concepts and processes..

WHAT CAREER PATHS WOULD THIS COURSE BE SUITABLE FOR?

Many students who have taken the A Level in Government and Politics go on to study politics at university.

Careers may include: researcher, member of local or national government or even start on the path to become a future Prime Minister! Other job opportunities include journalism, teaching or work in the legal profession.

WHAT WILL I LEARN WHILST STUDYING?

During this course, students will study: Business objectives and strategic decisions, external influences facing businesses, marketing and marketing strategies, operational strategy, human resources, accounting and financial considerations, the global environment of business.

HOW WILL I BE ASSESSED?

Paper 1: - UK Government and Politics: Pressure gauges, Political parties, Voter behaviour, Democracy, Constitution, Executive, Legislative, The EU, Judiciary

Paper 2: – Comparisons: Comparative UK/US politics – covers all the above but in the USA compared with UK

Paper 3: – Ideologies: Conservatism, Liberalisation, Socialism, Feminism

WHAT ARE THE ENTRY REQUIREMENTS?

REQUIRED APS
4.5



SPECIFIC REQUIREMENTS

Minimum Grade 5 in English Language



WHAT SKILLS CAN I GAIN?

The A-Level history qualifications offer an engaging and effective introduction to History. Students will learn the fundamentals of the subject and develop skills valued by higher education (HE) and employers, including critical analysis, independent thinking, research skills and the ability to synthesis a range of different types of evidence and construct a well substantiate argument.

WHAT CAREER PATHS WOULD THIS COURSE BE SUITABLE FOR?

As a facilitating subject History is a well-respected academic A-Level course accepted by every major University and employer. It develops the skills of analysis and evidence building and encourages students to reach justified and conclusions. It is very much beneficial to those wanting to enter a wide range of careers, including law, accountancy, teaching, police and business management. There is not a career that history will not be beneficial too

WHAT WILL I LEARN WHILST STUDYING?

- The Making of Modern Britain 1951-2007
- The Making of a Superpower USA 1865-1977
- Non-Exam Assessment: Tudor Rebellions 1485-1587

HOW WILL I BE ASSESSED?

Two written examinations at the end of year 13. Each exam is two and a half hours long. Each contribute 40% towards the final grade. Coursework is one 3500 word non-examined assessment which is completed during year 12 and year 13. This is worth 20% of final grade.

WHAT ARE THE ENTRY REQUIREMENTS?

REQUIRED APS

4.5



SPECIFIC REQUIREMENTS

Minimum Grade 5 English Language



COURSE IS EQUIVALENT TO
One A Level

COURSE TITLE
A-Level History

EXAM BOARD
AQA



Why Should I Study History?

History is all around us. The study of history ignites student's curiosity about the past in Britain and the wider world.

Through finding out about how and why the world, our country, culture and local community have developed over time, students understand how the past influences the present. History enables students to develop a context for their growing sense of identity and enables them to understand others and show compassion.

The study of history encourages students to show courage when learning about the past by asking questions and debating difficult or morally challenging topic areas.

COURSE IS EQUIVALENT TO
One A Level

COURSE TITLE
A-Level Mathematics

EXAM BOARD
Edexcel

Why Should I Study Mathematics?

The main reason for studying mathematics to an advanced level is that you find it interesting and enjoyable. You like its challenge, its clarity, and the fact that you generally know when you are right.

For many university courses a knowledge of mathematics at A2 level is seen as desirable and in some cases essential. Studies have shown that people with an A level in mathematics also tend to earn more on average than those without. Ultimately, mathematics is an amazing subject to have studied at A-Level and provided you have a solid understanding of the GCSE concepts before you start. With perseverance and effort, you should find this course extremely rewarding.

WHAT SKILLS CAN I GAIN?

The transferable skills that you develop such as problem solving, teamwork, creativity, analytical and lateral thinking make you a very favourable candidate for any employer.

WHAT CAREER PATHS WOULD THIS COURSE BE SUITABLE FOR?

Mathematics would be a stand out A Level to have for the majority of career paths as it shows your ability to think logically, be analytical and problem solve. Mathematics would link well with careers linked to the following subjects as well: Science (especially Physics), Engineering, Psychology, Computing, Economics and Business Studies.

WHAT WILL I LEARN WHILST STUDYING?

The course enables you to follow a variety of mathematical topics. Pure Mathematics will focus primarily on number, algebra, and some aspects of shape and space, culminating in a detailed study of calculus and vector algebra. Statistics is about the collection, analysis and interpretation or explanation, and presentation of data. Statistics compliments a wider range of fields such as banking and finance, biochemical sciences, psychology and any field that requires the analysis of data.

Mechanics is about applying maths to solve physical problems in the real world. It deals with topic such as forces, inertia, energy, statics and dynamics. Mechanics compliments fields such as physics, engineering, architecture, information technology and manufacturing.

HOW WILL I BE ASSESSED?

This will take place at the end of year two. The content is assessed in three examinations. Two of these are in pure mathematics and the other in applied mathematics including statistics & mechanics.

WHAT ARE THE ENTRY REQUIREMENTS?

REQUIRED APS

5.4

SPECIFIC REQUIREMENTS

Minimum Grade 6 in Maths

Minimum Grade 4 in English Language



WHAT SKILLS CAN I GAIN?

A-level music involves written, analytical, practical and social/personal skills such as:

- Independent learning: having to be disciplined about practice
- Team working: particularly if they're involved in weekly groups or ensembles, concerts and performances
- Performance and presentation skills: which are useful for any job/career
- Listening: these are highly developed in musicians and it is an important part of the course analytical and essay-writing skills
- Confidence and self-esteem: which has a knock-on effect in all areas of life and learning
- Creativity and self-expression: helping young people to think differently and harness the power of their imagination.

WHAT CAREER PATHS WOULD THIS COURSE BE SUITABLE FOR?

The varied nature of the course enables students to develop highly desirable skills in areas such as self management, creativity, data analysis, performance, teamwork, problem-solving, and communication, all of which makes them an attractive prospect for potential employers.

As well as the obvious destinations for a Music graduate, Other popular careers for include broadcasting, publishing, law, politics and the Civil Service.

WHAT WILL I LEARN WHILST STUDYING?

You will learn how to be the best performer you can be, compose music in different genres and explore a wide range of music and composers. You will also learn a broad range of music theory.

HOW WILL I BE ASSESSED?

30% Composition, 1 free choice and one to a specific brief

30% Performance – A recital of no less than 9 minutes in length. Grade 8 standard would be preferable and pieces must show a contrast in genres.

40% Listening exam encompassing aural questions, essay based analysis on 18 set works.

WHAT ARE THE ENTRY REQUIREMENTS?

REQUIRED APS

4.3



SPECIFIC REQUIREMENTS

Minimum Grade 4 in English Language



COURSE IS EQUIVALENT TO
One A Level

COURSE TITLE
A-Level Music

EXAM BOARD
Edexcel



Why Should I Study Music?

You should study music if you want to be a musician or work within the industry, if you are good at singing or playing an instrument or even if you enjoy the technology side of music. Music is also good choice if you are studying other performing arts subjects, such as dance or drama.

Music Education enhances learning skills, communication skills, creativity, teamwork, discipline, cultural awareness, respect for others, and self-esteem through personal accomplishment. It provides transferable skills such as self-management, creativity, data analysis, performance, teamwork, problem-solving, and communication.

All of these will come in useful for studying other subjects at A Level, progressing to University and when you are job hunting. Music is highly regarded as an academic subject and so could complement your other studies in leading to a professional career.

PHILOSOPHY, RELIGION & ETHICS

COURSE IS EQUIVALENT TO
One A Level

COURSE TITLE
A-Level Philosophy, Religion & Ethics

EXAM BOARD
AQA

**Why Should I Study Philosophy,
Religion & Ethics ?**

Do you ever question life? If the answer is yes, then this is for you. Philosophy, Religion & Ethics is a subject where we debate the fundamental questions of life—does life have meaning? Why are we here? Is there a God? Is there life after death?

These questions themselves are ones with which humans throughout time have grappled, and probably will continue to grapple with into the future. Giving us a simple reason to study religion, to deepen our understanding of others and ourselves. More than ever before, the world we live in is both multicultural and global.

We no longer need to travel across the ocean to visit a Hindu temple or to meet a Sikh. The chances are that you can find a temple or mosque within a few miles of where you live, and it is almost certain that you will be meet someone from any and all of these religious traditions on the street. This makes it even more essential that we cultivate our ability to understand and interpret other people's religious traditions.

WHAT SKILLS CAN I GAIN?

To consider the world around you, to consider whether there is a spiritual element to life, to be enquiring, critical and reflective, to learn and understand how people make moral decisions, to formulate your own opinions on various current ethical issues, identify, investigate and analyse current questions and issues.

WHAT CAREER PATHS WOULD THIS COURSE BE SUITABLE FOR?

There are many careers available for people with A-Level Philosophy, Religion & Ethics. These include: Barrister, Civil servant, Human resources, Legal executive, Primary and Secondary Teacher, Paralegal, Recruitment consultant, Religious Leader, Solicitor

WHAT WILL I LEARN WHILST STUDYING?

Philosophy and the existence of God – Evil and suffering, religious experience and language,

Miracles, Self and life after death. Ethics and religion – Ethical theories, issues of human life and death, issues of animal life and death, introduction to meta ethics, free will and moral responsibility, conscience,

Bentham and Kant. Study of religion – Sources of wisdom and authority, God/gods/ultimate reality, self, death and the afterlife, good conduct and key moral principles, Expression of religious identity, Religion gender and sexuality, Religion and science.

The dialogue between philosophy of religion and religion. The dialogue between ethical studies and religion..

HOW WILL I BE ASSESSED?

You will have 2 examinations at the end of year 13.

Paper 1 – Philosophy and Ethics – worth 50% of overall grade.

Paper 2 – Study of religion – worth 50% of overall grade.

WHAT ARE THE ENTRY REQUIREMENTS?

REQUIRED APS
4.5

SPECIFIC REQUIREMENTS

Minimum Grade 4 English Language



WHAT SKILLS CAN I GAIN?

Technical skills in a range of processes and techniques, including darkroom technique and Photoshop editing. Students gain analytical, personal reflection, and project management skills in terms of meeting deadlines and setting routes of exploration and inquiry.

WHAT CAREER PATHS WOULD THIS COURSE BE SUITABLE FOR?

Fashion, Education, Advertising, Media, Design, Marketing, Publishing, Film and TV, Museums and Galleries, Freelance Commercial Photographer, Graphic Designer.

HOW WILL I BE ASSESSED?

Year 1: Component 01: Personal investigation (60%)
Learners should produce two elements:

- (i) a portfolio of practical work showing their personal response to either a starting point, brief, scenario or stimulus, devised and provided by the learner or centre.
- (ii) a related study: an extended response of a guided minimum of one thousand words. This portfolio will consist of a number of projects aimed at increasing a learner's independence and originality by developing personal ideas and concepts, and exploring and developing skills in photographic disciplines.

Year 2: Component 02: Externally set task (40%)

The early release paper will be issued on 1 February and will provide learners with a number of themes, each with a range of written and visual starting points, briefs and stimuli. A creative and imaginative response should be based on one of these options.

WHAT ARE THE ENTRY REQUIREMENTS?

REQUIRED APS

4.3



SPECIFIC REQUIREMENTS

Minimum Grade 4 in English Language



COURSE IS EQUIVALENT TO
One A Level

COURSE TITLE
A-Level Art (Photography)

EXAM BOARD
OCR



Why Should I Study Photography?

"The camera is an instrument that teaches people how to see without a camera."

Dorothea Lange

Photography is both a highly technical skill and a deeply personal one. The language of photography is democratic, in a world where everyone is a photographer, how do you make your work stand out. Photography teaches you how to look, Photography can do anything, it can be a puzzle, a record, a memory a statement.

A Photographer makes ideas visible.

PHYSICS

COURSE IS EQUIVALENT TO
One A Level

COURSE TITLE
A-Level Physics

EXAM BOARD
OCR A

Why Should I Study Physics?

Physics uses a combination of experiments and mathematics to try to explain the world around us.

Why are planets shaped like spheres? Why do the stars shine? Why is the sky blue? If these are the sorts of questions that you would like to be able to answer, then Physics is the course for you.

WHAT SKILLS CAN I GAIN?

You will develop a range of skills including the ability to analyse and interpret scientific data.

You will also gain skills in designing scientific investigations taking into account factors such as ensuring variables are controlled in experiments and that the data is collected is reliable. You will also gain practical skills by carrying out a range of scientific experiments.

WHAT CAREER PATHS WOULD THIS COURSE BE SUITABLE FOR?

This course provides a foundation for an apprenticeship or degree in Astrophysics, Applied or Theoretical Physics, Astronomy, Artificial Intelligence, Microelectronic Science, Medicine, IT, Optometry, Aeronautical / Electrical / Mechanical engineering, Software and Computing, as well as Architecture.

WHAT WILL I LEARN WHILST STUDYING?

You will study a range of topics in A level Physics including Forces & motion, electrons, waves & photons, quantum physics, the Newtonian world, astrophysics & cosmology and medical physics.

HOW WILL I BE ASSESSED?

At the end of the 2 year course you will be assessed by completing 3 examination papers, paper 1 paper 2 and paper 3. The combined mark for these 3 examination papers will determine your overall grade.

WHAT ARE THE ENTRY REQUIREMENTS?

REQUIRED APS

5.8



SPECIFIC REQUIREMENTS

Minimum Grade 5 in English Language,
Minimum Grade 6 in Maths and Science



WHAT SKILLS CAN I GAIN?

Practical skills such as how to use 2D and 3D CAD, prototyping with CNC machines and the 3D printer, workshop skills, 2D&3D drawing skills will all be taught. You will also gain detailed knowledge of the design process, manufacturing processes, materials knowledge, design history, an understanding of new technologies and modern manufacturing techniques.

WHAT CAREER PATHS WOULD THIS COURSE BE SUITABLE FOR?

Product designer, design engineer, graphic designer, interior designer, industrial designer, pattern designer, CAD technician, architect, game designer, jewellery designer, animator, furniture designer, museum curator, illustrator, printmaker, magazine editor, special effects technician, manufacturing engineer, materials scientist, web designer, theatre set design, communication designer, sound engineer, electronic engineer, mechanical engineer, video game designer, robotic engineer and many more!

WHAT WILL I LEARN WHILST STUDYING?

This specification enables learners to work creatively when designing and making and apply technical and Practical expertise, in order to:

- Develop curiosity about how products work
- Gain an insight into creative and manufacturing industries
- Develop an in-depth knowledge and understanding of materials, components and processes
- Learning how to create and analyse a design concept
- Produce high-quality prototypes/products

HOW WILL I BE ASSESSED?

Paper 1: Technical principles

Written exam: 2 hours and 30 minutes • 120 marks • 30% of A-level • taken at the end of Yr 13

Paper 2: Designing and making principles

Written exam: 1 hour and 30 minutes • 80 marks • 20% of A-level • taken at the end of Yr 13

Non-exam assessment (NEA):

WHAT ARE THE ENTRY REQUIREMENTS?

REQUIRED APS

4.5



SPECIFIC REQUIREMENTS

Grade 5 in Maths, 4 in English Language and Grade 5 in related subject at GCSE



COURSE IS EQUIVALENT TO
One A Level

COURSE TITLE
A-level Design and Technology:
Product Design

EXAM BOARD
AQA



Why Should I Study Product Design?

Product Design is an inspiring, creative and technical subject. Designers aim to observe and listen to the problems people face and strive to make everyday tasks easier.

This specification encourages learners to use creativity and imagination when applying iterative design processes to develop and modify designs by developing their skills in the workshop, 3D prototyping, virtual modelling and hand graphic and communication skills.

COURSE IS EQUIVALENT TO
One A Level

COURSE TITLE
A-Level Psychology

EXAM BOARD
AQA

Why Should I Study Psychology?

Human behaviour is fascinating – this course encourages you to consider why we think, feel and act in the ways that we do. Is human behaviour shaped more through nature, or nurture (or the interaction of these together)?

- What effect does the brain have on behaviour?
- How can mental health disorders be treated effectively?
- What might make eye-witness testimony less accurate?
- Why do people commit crime?
- Do childhood relationships have an impact on relationships in later life?

WHAT SKILLS CAN I GAIN?

Research skills, mathematical skills, communication skills, an understanding of why people act in the way that they do and an appreciation of cultural diversity.

WHAT CAREER PATHS WOULD THIS COURSE BE SUITABLE FOR?

Any career within Psychology (e.g. forensics, health, counselling, clinical, developmental, educational etc.) or Social Sciences (Criminology, Sociology, Social Worker), and will give transferable skills for many other careers (e.g. medical, teaching, business, sport).

WHAT WILL I LEARN WHILST STUDYING?

This course will give you a firm grounding in the main psychological approaches, theories, topics and debates, and how these can apply to many aspects of life. You will also study research methods, so this will encourage you to think about reliability and validity of both descriptive and inferential statistics.

You will complete three modules: Introductory topics in Psychology (Social Influence, Memory, Attachment, Psychopathology), Psychology in Context (Approaches, Biopsychology, Research Methods), and Issues and Options in Psychology (Issues and debates, Relationships, Schizophrenia, Forensic Psychology).

HOW WILL I BE ASSESSED?

Three two hour exams at the end of Y13.

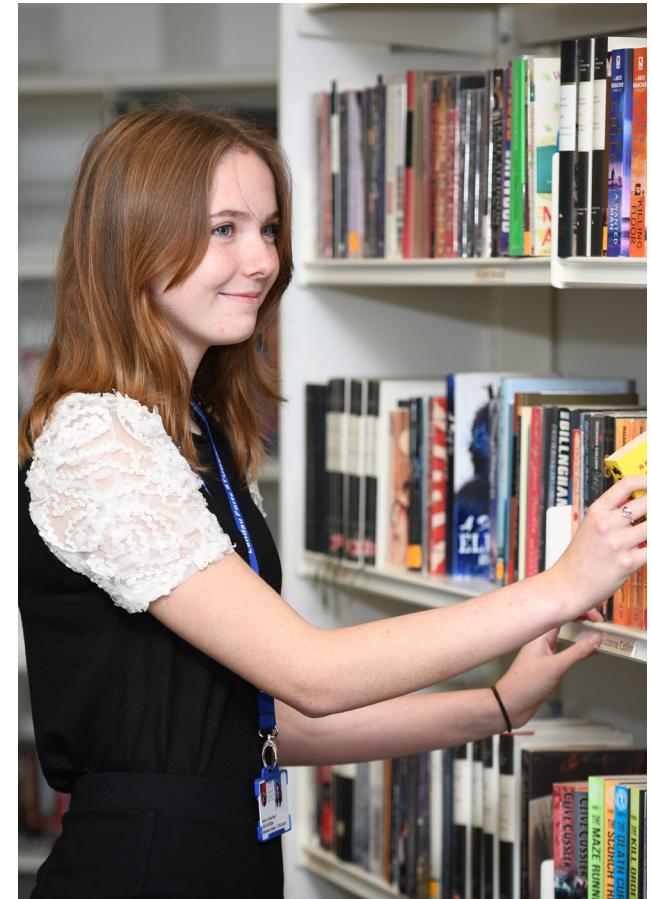
WHAT ARE THE ENTRY REQUIREMENTS?

REQUIRED APS
4.7



SPECIFIC REQUIREMENTS

Minimum grade 5 in Maths, English Language and Science



WHAT SKILLS CAN I GAIN?

Through studying A level Sociology you will learn to think critically and independently about society and the diversity which its citizens experience.

You will also develop an informed understanding of our rapidly changing world, as well as your place within it. Sociology is an essay-based subject, so it involves a lot of reading and writing, strengthening your ability to develop an argument both in class and on paper. The subject requires you to debate issues for which there are several different but well-accepted explanations, and to become critical of different viewpoints.

By analysing the strengths and limitations of all perspectives studied, you learn not to take things for granted, or to accept assertions at face value.

WHAT CAREER PATHS WOULD THIS COURSE BE SUITABLE FOR?

A Level Sociology gives you a strong foundation for further study of a range of academic subjects at degree level. It is a good foundation subject as the knowledge you learn can be applied to all aspects of society and it provides a variety of academic skills especially thinking critically about the world.

Sociology can lead to a job in a variety of careers such as teaching, social work and social policy making, law, the police, journalism and the civil service.

WHAT WILL I LEARN WHILST STUDYING?

A broad range of societal topics including:

- Research Methods, Families and Households, the role of education in society and the reasons why pupils from different backgrounds achieve different levels of success
- Beliefs in society
- Crime and deviance with Theory and Methods

HOW WILL I BE ASSESSED?

Three exams at the end of the second year, consisting of some short questions, structured responses and essays.

WHAT ARE THE ENTRY REQUIREMENTS?

REQUIRED APS

4.5



SPECIFIC REQUIREMENTS

Minimum Grade 4 in English Language



COURSE IS EQUIVALENT TO
One A Level

COURSE TITLE
A-Level Sociology

EXAM BOARD
AQA



Why Should I Study Sociology?

A-Level Sociology offers you the opportunity to develop the essential knowledge and understanding of sociological thought and methods, together with a range of skills. Sociology is the study of human societies, in all sorts of contexts.

A-Level Sociology focuses on contemporary society, providing an awareness of the importance of social structure and actions in explaining social forces and issues.

SPANISH

COURSE IS EQUIVALENT TO
One A Level

COURSE TITLE
A-Level Spanish

EXAM BOARD
AQA

Why Should I Study Spanish?

A-level Spanish will significantly improve your proficiency in the Spanish language. Being bilingual or multilingual is an asset in today's globalized world, and Spanish is one of the most widely spoken languages. It opens opportunities for travel, work, and communication in many parts of the world. Studying Spanish at A-level allows you to explore the rich and diverse cultures of the Spanish-speaking world. This cultural awareness can be a significant advantage when engaging with people from Spanish-speaking countries or working in international settings.

The Spanish-speaking world has a rich literary, artistic, and historical heritage. Studying Spanish can allow you to engage with and appreciate this cultural wealth. Being able to converse with Spanish speakers can strengthen your personal and professional relationships. It can also make you more culturally sensitive and effective in cross-cultural interactions. Studying A-level Spanish offers you not only linguistic skills but also cultural, personal, and career advantages.

WHAT SKILLS CAN I GAIN?

Mastering a foreign language is a challenging but rewarding endeavour. It can boost your self-esteem and sense of accomplishment as you reach higher levels of proficiency. Learning a new language has been shown to improve cognitive skills like problem-solving, multitasking, develop critical thinking skills, intercultural competence, and memory. It can also enhance your ability to learn other languages in the future.

WHAT CAREER PATHS WOULD THIS COURSE BE SUITABLE FOR?

A strong command of the Spanish language can be a valuable skill in various career fields. Many employers look for candidates who can communicate in Spanish, especially in industries like international business, tourism, education, healthcare, and diplomacy. If you plan to pursue further education, proficiency in Spanish can open doors to universities and programs in Spanish-speaking countries. It can also be an asset when applying for scholarships and grants.

WHAT WILL I LEARN WHILST STUDYING?

A-level Spanish focuses on enhancing language skills in listening, speaking, reading, and writing. You'll develop effective communication in Spanish, broaden vocabulary, and deepen grammar knowledge. The course explores the culture, customs, and contemporary issues of Spanish-speaking regions. It includes the study of Spanish and Latin American film and literature, encouraging analysis of texts and media to understand their cultural impact. A-level Spanish covers historical and political aspects, providing insights into socio-political development.

The curriculum delves into current events and global issues in the Spanish-speaking world, including immigration, the environment, and social justice. An Independent Research Project is part of the course, allowing exploration of a personal interest within the curriculum.

HOW WILL I BE ASSESSED?

Paper 1: Listening, Reading, and Writing; Paper 2: Writing; Paper 3: Speaking.

WHAT ARE THE ENTRY REQUIREMENTS?

REQUIRED APS

4.5



SPECIFIC REQUIREMENTS

Minimum Grade 6 in Spanish
Minimum Grade 4 in English Language







VOCATIONAL COURSES

36 | Business (applied)

37 | Creative Media (single)

38 | Creative Media (double)

39 | Criminology

40 | Dance (Performing Arts)

41 | Health & Social Care

42 | ICT (applied)

43 | Law (applied)

44 | Science (applied)

45 | Sport (single award)

46 | Sport (double award)

47 | Travel & Tourism



BUSINESS (APPLIED)

COURSE IS EQUIVALENT TO
One A Level

COURSE TITLE
Level 3 BTEC Extended Certificate in
Applied Business

EXAM BOARD
Pearson

Why Should I Study Music A-Level?

This course provides an alternative route to the A level qualification for those who wish to pursue a career in business.

For students who have an enthusiasm for business and want to gain more practical understanding then this is the course for you.

WHAT SKILLS CAN I GAIN?

This course allows you to develop your knowledge and understanding of key business theories and concepts. In addition, you will develop your skills of research, analysis and evaluation in report writing and increase organisational and communication skills as well as acquire skills to produce business and financial documents. You will acquire a range of relevant business and generic skills, including decision making and problem solving.

WHAT CAREER PATHS WOULD THIS COURSE BE SUITABLE FOR?

The course opens up a wide variety of options in Higher Education, including: Business, Accounting and Finance, Management, HR, International/ European Business, Digital Marketing. It also offers a credible route into employment and training

WHAT WILL I LEARN WHILST STUDYING?

During this course, students will study:

UNIT 1: Exploring business

UNIT 2: Developing a marketing campaign

UNIT 3: Personal and business finance

UNIT 8: Recruitment and Selection

HOW WILL I BE ASSESSED?

UNIT 1- Report portfolio

UNIT 2- External Assessment

UNIT 3- External Assessment

UNIT 8- Report portfolio

WHAT ARE THE ENTRY REQUIREMENTS?

REQUIRED APS

4.0



SPECIFIC REQUIREMENTS

Minimum Grade 4 in English or Maths



WHAT SKILLS CAN I GAIN?

This course provides transferable knowledge and skills that prepare learners for progression to university. The transferable skills that universities value include:

- The ability to learn independently, research actively and methodically
- Being able to give presentations and being active group members.
- Study a range of media practices, including video, photography, sound, animation and digital media.
- Develop projects to suit your creative and career ambitions. Open doors to your future career by showcasing your work to the public and developing a portfolio of work. Enhance your professional profile further by engaging with our live briefs.

WHAT CAREER PATHS WOULD THIS COURSE BE SUITABLE FOR?

Our learners move onto HE courses and work as directors, producers, camera crew, editors and sound designers. They set up successful businesses. They become fashion and travel photographers, animators, book illustrators, web designers and curators. They are independent artists, marketing and advertising executives, media strategists, game makers and educators.

WHAT WILL I LEARN WHILST STUDYING?

Learn from expert staff skilled in narrative, documentary and artistic media practices – from film, photography and animation to interactive and immersive media, projection mapping and online media production.

HOW WILL I BE ASSESSED?

Two externally assessed units

- Media Representations - This is a two-hour online exam analysing texts and exploring the concept of representation
- Responding to a Commission - Learners will be provided with a commission for a media production by the exam board two weeks before the supervised assessment period. They will then complete the tasks in 5 hours under supervised conditions

Two internally assessed units

- Pre-production Portfolio
- Film Production

WHAT ARE THE ENTRY REQUIREMENTS?

REQUIRED APS

4.0



SPECIFIC REQUIREMENTS

Minimum Grade 4 in English Language



COURSE IS EQUIVALENT TO
One A Level

COURSE TITLE
Level 3 BTEC Extended Certificate in Creative Media

EXAM BOARD
Pearson



Why Should I Study Creative Media?

Creative Media launches you on a journey to make media that shapes, reflects and changes the world we live in.

Our industry-facing course develops your creative voice, engages with communities on social issues and provides a practical grounding in professional media practices.

CREATIVE MEDIA (DOUBLE)

COURSE IS EQUIVALENT TO
Two A-Levels

COURSE TITLE
Pearson BTEC Level 3 National Diploma
in Film and Television Production

EXAM BOARD
Pearson

Why Should I Study Creative Media?

This qualification is designed to give learners a technical understanding of film and television production. Learners gain knowledge and skills in areas such as single- and multi-camera techniques, lighting, sound recording and editing to produce practical film and television projects.

The qualification is for post-16 learners and is intended as a two-year programme of study, normally in conjunction with one or more qualifications at Level 3. It is aimed at students looking to progress to employment in this sector.

WHAT SKILLS CAN I GAIN?

This course provides transferable knowledge and skills that prepare learners for progression to university. The transferable skills that universities value include:

- The ability to learn independently, research actively and methodically
- Being able to give presentations and being active group members.
- Study a range of media practices, including video, photography, sound, animation and digital media. Develop projects to suit your creative and career ambitions. Open doors to your future career by showcasing your work to the public and developing a portfolio of work. Enhance your professional profile further by engaging with our live briefs.

WHAT CAREER PATHS WOULD THIS COURSE BE SUITABLE FOR?

Our learners move onto HE courses and work as directors, producers, camera crew, editors and sound designers. They set up successful businesses. They become fashion and travel photographers, animators, book illustrators, web designers and curators. They are independent artists, marketing and advertising executives, media strategists, game makers and educators.

WHAT WILL I LEARN WHILST STUDYING?

Learn from expert staff skilled in narrative, documentary and artistic media practices – from film, photography and animation to interactive and immersive media, projection mapping and online media production.

HOW WILL I BE ASSESSED?

10 units of which 4 are mandatory and 2 are external.

- Digital Media Skills – External Exam
- Media Enterprise – Mandatory internal assessment
- Responding to a Commission – External Exam
- Film Production – Fiction - Mandatory internal assessment
- Storyboarding for Digital Media - internal assessment
- Scriptwriting - internal assessment
- Film Editing - internal assessment
- Stop Motion Animation - internal assessment
- Interviewing Techniques - internal assessment
- Single Camera Techniques - internal assessment

WHAT ARE THE ENTRY REQUIREMENTS?

REQUIRED APS

4.0



SPECIFIC REQUIREMENTS

Minimum Grade 4 in English Language



WHAT SKILLS CAN I GAIN?

Criminology will allow you to be independent and a highly skilled researcher combined with up to date IT skills. It will enable you to have class debates and discussions about the impact of crime on our society and the ways in which it is prevented. Group work is also integral to the course and here your skills can be put to the test supporting your peers and progressing to your full potential.

WHAT CAREER PATHS WOULD THIS COURSE BE SUITABLE FOR?

Career paths can range from the criminal justice system to an independent researcher. Working in criminology or the criminal justice system can be a great career choice if you are passionate about making a difference in your community and in the lives of others. Whether you choose to work on the front line with offenders or victims or behind the scenes in a research-based position, you will have a great chance to contribute to how crime is dealt with in your community and perhaps even be influential in reducing crime rates. Helping others to understand the motivations behind crime, encouraging rehabilitation.

WHAT WILL I LEARN WHILST STUDYING?

Students will study four units that will cover all areas of Criminology, this will include; Changing Awareness of Crime, Criminological Theories, Crime Scene to Courtroom and Crime and Punishment. Students will learn a range of skills within each unit that will allow them to achieve the best grade possible to set them up for their future career path.

HOW WILL I BE ASSESSED?

The Diploma in Criminology is assessed through a combination of two Internal and External Units.

Internal Unit - Changing Awareness of Crime

External Unit– Criminological Theories

Internal Unit – Crime Scene to Court Room

External Unit– Crime and Punishment

WHAT ARE THE ENTRY REQUIREMENTS?

REQUIRED APS

4.0



SPECIFIC REQUIREMENTS

Minimum Grade 4 in English Language or Maths



COURSE IS EQUIVALENT TO
One A Level

COURSE TITLE
WJEC Level 3 Diploma Criminology

EXAM BOARD
WJEC



Why Should I Study Creative Criminology?

This is a qualification with elements of Psychology, Law and Sociology that complements studies in humanities related subjects. The qualification would support learners' progression from any study at Level 2, particularly GCSEs in Sociology, Law or Psychology.

The course will go beyond the traditional academic study with guest speakers from agencies involved in services/ practice that the Criminology course material covers.

DANCE (PERFORMING ARTS)

COURSE IS EQUIVALENT TO
One A Level

COURSE TITLE
BTEC Extended Certificate
in Performing Arts

EXAM BOARD
Pearson

Why Should I Study Dance (Performing Arts?)

Dance is a joyous and expressive art form. It releases 'feel-good' hormones associated with increased feelings of happiness and confidence. Dance and performing arts qualifications provide the opportunity to develop skills that are essential to thrive in a variety of careers, not just those within the dance or creative sectors, and for life in general!

A study was conducted was Dance Quest, a project that encouraged young people to engage with and watch dance. Results showed that dance had made a positive impact on health and wellbeing and on future aspirations. There is no doubt that dance is a powerful tool for positive wellbeing!

WHAT SKILLS CAN I GAIN?

Pearson BTEC Dance qualifications offer candidates the opportunity to learn about the industry, developing their understanding and practical dance skills, and applying the skills and knowledge in a vocational dance setting. Each qualification prepares learners for the next level of study within the field of Dance, preparing learners for the world of work, formal dance training or university. In general, assessment often includes demonstration of understanding, development in technique classes and workshops, application of skills in rehearsal and performance and self-review.

WHAT CAREER PATHS WOULD THIS COURSE BE SUITABLE FOR?

The course can lead you to studying dance at university. Here are some careers that you could do with a qualification in dance.

- Arts administrator
- Choreographer
- Community arts worker
- Dance movement psychotherapist
- Dancer
- Personal trainer
- Theatre director

WHAT WILL I LEARN WHILST STUDYING?

Core disciplines in dance: ballet, jazz and contemporary, along with other dance techniques such as street, urban dance and choreographic skills.

The course will also prepare students for next steps, such as auditioning for dance/stage schools and university.

HOW WILL I BE ASSESSED?

Mandatory units:

Unit 1-Investigating Practitioners work (Externally marked written exam. 3-hour paper)

Unit 2- Developing Skills and Techniques for Live Performance (Internally marked practical performance exam, with a coursework portfolio)

Unit 3- Group Workshop Performance (Externally marked practical performance exam with 4 written papers to accompany this.

Unit 10-Jazz Dance Techniques (Dance students)

WHAT ARE THE ENTRY REQUIREMENTS?

REQUIRED APS

4.0



SPECIFIC REQUIREMENTS

Minimum Grade 4 in English or Maths



WHAT SKILLS CAN I GAIN?

The skills and knowledge you will gain from this course once qualified are:

- Transferable Workplace Skills
- Communication And People Skills
- Legislation And Policies
- Understanding Different Needs
- How To Create A Treatment Plan For An Individual,
- Understanding Holistic Well-Being, Ability To Work With And Analyse Case Studies

WHAT CAREER PATHS WOULD THIS COURSE BE SUITABLE FOR?

Nursing, Midwifery, Paramedic, Speech & Language Therapist, Dietician, Counsellor, Occupational Therapist, Radiographer.

WHAT WILL I LEARN WHILST STUDYING?

You will study a range of different topics including: Human Lifespan Development, Working in Health and Social Care, Meeting Individual Care and Support Needs, Physiological Disorders and their Care.

HOW WILL I BE ASSESSED?

2 external examinations – 1 hour 30 minutes.

2 internal assignments – Task 1 and Task 2 in each assignment.

WHAT ARE THE ENTRY REQUIREMENTS?

REQUIRED APS

4.0

SPECIFIC REQUIREMENTS

Minimum Grade 4 in English Language



COURSE IS EQUIVALENT TO
One A Level

COURSE TITLE
Level 3 BTEC Extended Certificate in
Health and Social Care

EXAM BOARD
Pearson



Why Should I Study Health & Social Care

The health and social care sector comprises two sub sectors: healthcare and social care.

There are more than three hundred distinct career paths within the NHS making the subject ideal for future pathways.

This course suits students interested in learning about both sectors as part of a balanced study programme.

ICT (APPLIED)

COURSE IS EQUIVALENT TO
One A Level

COURSE TITLE
Cambridge Technical in IT

EXAM BOARD
OCR

Why Should I Study ICT?

The OCR Cambridge Technical in Information Technology, is intended as an Applied General qualification covering 360 GLH and equivalent in size to one A Level.

It is designed for learners who are interested in an introduction to the study of creating IT systems to manage and share information alongside other fields of study, with a view to progressing to a wide range of higher education courses, not necessarily in IT.

WHAT SKILLS CAN I GAIN?

Learners will develop a common core of IT knowledge and study areas such as the relationship between hardware and software that form an IT system, managing and processing data to support business and using IT to communicate and share information..

WHAT CAREER PATHS WOULD THIS COURSE BE SUITABLE FOR?

CAD Designer, Data Scientist, Software Developer, Technical Author, Cyber security, Digital Marketing, 3D animator, Network architect, Network architect, Systems analyst, UX designer, VFX artist, Web designer, Web developer.

WHAT WILL I LEARN WHILST STUDYING?

Topics include Fundamentals of IT, Global Information, Cyber Security, Project Management, and Internet of everything.

HOW WILL I BE ASSESSED?

Unit 1: Fundamentals of IT –90 GLH External

Unit 2: Global Information –90 GLH External

Unit 3: Cyber Security –60 GLH External

Unit 8: Project Management –60 GLH Internal

Unit 17: Internet of everything –60 GLH Internal

WHAT ARE THE ENTRY REQUIREMENTS?

REQUIRED APS
4.0



SPECIFIC REQUIREMENTS

Minimum Grade 4 in English or Maths



WHAT SKILLS CAN I GAIN?

Law lessons are a combination of independent research, practical demonstrations and written experiences. This ensures that students develop a wide range of skills that can be applied to both the legal and non-legal sector after Sixth Form. Students will use problem solving techniques, debating, and questioning and reasoning skills to present their outcomes. Students will learn to consider all aspects of a case as well as being given the opportunity to develop their own interpretations and opinions.

WHAT CAREER PATHS WOULD THIS COURSE BE SUITABLE FOR?

The course provides students with the ability to interpret legal cases and draw conclusions from these. These skills are the foundations for pursuing a career in the legal sector, but equally useful across many other disciplines and subjects.

Being successful in this qualification will open a range of opportunities to you both in and out of the legal sector. It is also welcomed by the majority of universities for entry to degree courses, such as a foundation degree in Business and Law or a Law honours degree.

WHAT WILL I LEARN WHILST STUDYING?

Throughout the course, students will look at the role and responsibilities of the court system, including those who work there. Additionally, students will study important historical cases through time and evaluate the impact that they have had on modern-day law. You will finish the course with a clear knowledge of legal terms and principles and this will leave you in an ideal place to pursue your legal interests further.

HOW WILL I BE ASSESSED?

The qualification is equivalent in size to one A-Level and you will study four units – 2 coursework, one exam and one controlled assessment. These are:

- Unit 1: Dispute Solving in Civil Law
- Unit 2: Investigating Aspects of Criminal Law and the Legal System
- Unit 3: Applying the Law
- The final unit is one from Aspects of Family Law, Consumer Law or Contract Law.

WHAT ARE THE ENTRY REQUIREMENTS?

REQUIRED APS

4.5



SPECIFIC REQUIREMENTS

Minimum grade 4 in English language



COURSE IS EQUIVALENT TO
One A Level

COURSE TITLE Level 3 BTEC Extended
Certificate in Applied Law

EXAM BOARD
Pearson



Why Should I Study Law?

Applied Law is a fascinating and thrilling subject that gives students the opportunity to study the criminal and civil court systems in the UK.

Law provides you with a strong introduction to the study of the legal sector, historic cases and key aspects of law.

SCIENCE (APPLIED)

COURSE IS EQUIVALENT TO
One A Level

COURSE TITLE
BTEC Extended Certificate in Applied Science

EXAM BOARD
Pearson

Why Should I Study Applied Science?

Now more than ever, Scientists are needed in the public and private sectors. The BTEC Extended Certificate in Applied science provides learners with a broad understanding of vocationally-related sciences to support your progress in taking up employment or moving on to higher education. It allows learners to study areas across all three disciplines of Biology, Chemistry and Physics alongside experimental techniques in such a way that is more applicable to every day life.

Other reasons to study applied science are; hands on learning - Employees with hands-on experience are highly sought after, so if you enjoy research projects, conducting experiments and exploring the wide variety of science specialisms, a career in the industry could be perfect for you and career pathways - In many countries around the world, STEM (science, technology, engineering and math) graduates are in high demand. Those with scientific expertise are attractive to employers, with opportunities that can take employees around the world.

WHAT SKILLS CAN I GAIN?

Studying this qualification will enable learners to develop their knowledge and understanding of scientific principles, as well as the scientific practical skills needed for a career in the science field. Applied science offers learners an opportunity to develop transferable skills such as problem-solving, research and communication as part of their applied learning.

WHAT CAREER PATHS WOULD THIS COURSE BE SUITABLE FOR?

The BTEC Extended Certificate in Applied Science qualification opens up the possibility of studying a range of degree courses at university including biological sciences, biomedical science, nursing, midwifery and forensic science to name a few. It will also give learners the opportunity to undertake a science based apprenticeship within the science field.

WHAT WILL I LEARN WHILST STUDYING?

The applied science course covers both fundamental scientific knowledge applicable to every day contexts as well as an array of practical skills associated with scientific based careers. Learners will cover topics such as:

- Scientific principles associated with Biology, Chemistry and Physics.
- Experimental and practical techniques
- The roles and skills of scientist, and the perceptions of science
- Scientific investigations including the production of risk assessments, writing methods, collecting & processing data and evaluation of the learners own work.
- How the human body works

HOW WILL I BE ASSESSED?

The applied science course is split into both externally and internally assessed units:

Unit 1. Principles and Application of Science I. Externally assessed examination.

Unit 2. Practical Scientific Procedures and Techniques. Internally assessed coursework.

Unit 3. Scientific Investigation Skills. Externally assessed examination.

Unit 12. Diseases and Infection. Internally assessed coursework.

WHAT ARE THE ENTRY REQUIREMENTS?

REQUIRED APS

4.5

SPECIFIC REQUIREMENTS

Minimum Grade 4 in Science and a grade 4 in English and Maths.



WHAT SKILLS CAN I GAIN?

You will develop your organisation, independence and time management in order to process and complete coursework assignments.

For the examinations, your communication skills and problem solving will be gained. From practical units, you will develop leadership, teamwork and consequently analysis.

WHAT CAREER PATHS WOULD THIS COURSE BE SUITABLE FOR?

Careers in the wider sporting industry including as a Sports Coach, PE Teacher, Physiotherapist, Sports Therapist or Sports Analyst.

WHAT WILL I LEARN WHILST STUDYING?

Units in Anatomy and Physiology, Fitness Testing and Programming, Careers in the Sports Industry and Practical Sports Performance analysis.

HOW WILL I BE ASSESSED?

Students will be assessed in one exam (33%), one controlled assessment (33%) and two units of coursework (67%).

WHAT ARE THE ENTRY REQUIREMENTS?

REQUIRED APS
4.0

SPECIFIC REQUIREMENTS
Minimum Grade 4 in English or Maths



COURSE IS EQUIVALENT TO
One A Level

COURSE TITLE
Level 3 BTEC Extended Certificate in Sport

EXAM BOARD
Pearson



Why Should I Study Applied Sport?

The course is ideal for those with a passion for sport, whether that be playing, observing, officiating or analysing sport.

For students who have a keen interest in anatomy and physiology, how the body can be trained and the practical skills performed as a result, this will benefit largely.

SPORT (DOUBLE AWARD)

COURSE IS EQUIVALENT TO
Two A Levels

COURSE TITLE
Level 3 BTEC Diploma in Sport

EXAM BOARD
Pearson

Why Should I Study for a Diploma in Sport?

The course is ideal for those with a passion for sport, whether that be playing, observing, officiating or analysing sport.

This course is suited to those passionate about sport and pursuing a career in it.

WHAT SKILLS CAN I GAIN?

You will develop your organisation, independence and time management in order to process and complete coursework assignments.

For the examinations, your communication skills and problem solving will be gained. From practical units, you will develop leadership, teamwork and consequently analysis.

WHAT CAREER PATHS WOULD THIS COURSE BE SUITABLE FOR?

Careers in the wider sporting industry including as a Sports Coach, PE Teacher, Physiotherapist, Sports Therapist, Sports Analyst, Sports Journalist, Sports Development / NGB Officer or an Official.

WHAT WILL I LEARN WHILST STUDYING?

- Units in Anatomy and Physiology
- Fitness Testing and Programming
- Careers in the Sports Industry
- Sports Leadership
- Practical Sports Performance analysis
- Business in the Sport and Active Leisure Industry
- Skill Acquisition
- Rules, Regulations and Officiating
- Technical and Tactical Demands in Sport

HOW WILL I BE ASSESSED?

Students will be assessed in one exam, two controlled assessments and six units of coursework.

WHAT ARE THE ENTRY REQUIREMENTS?

REQUIRED APS

4.0



SPECIFIC REQUIREMENTS

Minimum Grade 4 in English or Maths



WHAT SKILLS CAN I GAIN?

There are many skills that this course helps you develop such as

- Develop an understanding of the Travel and Tourism locations as well as the organisations involved in the industry
- Develop communication skills by working within in a team but also understanding customer feedback
- Develop research and IT skills
- Develop problem-solving skills

WHAT CAREER PATHS WOULD THIS COURSE BE SUITABLE FOR?

In addition to the travel and tourism sector-specific content, the requirements of the qualification will mean that learners develop transferable skills, which are highly regarded by higher education providers and employers. Careers could include; Business management, Flight attendants, Hotel management, marketing, meeting and events planner and Travel operators.

WHAT WILL I LEARN WHILST STUDYING?

Studying Travel and Tourism, we will cover 4 main areas; The world of Travel and Tourism, Global destinations, The principles of marketing in Travel and Tourism and Visitor attractions.

HOW WILL I BE ASSESSED?

Unit 1: The world of Travel and Tourism will be an external exam in January of year 12

Unit 2: Global destination will be an external exam in June of year 12.

Unit 3: The principles of marketing in Travel and Tourism and

Unit 9: Visitor attractions will be internal assessments completed in year 13.

WHAT ARE THE ENTRY REQUIREMENTS?

REQUIRED APS

4.0



SPECIFIC REQUIREMENTS

Minimum Grade 4 in English Language or Maths



COURSE IS EQUIVALENT TO
One A Level

COURSE TITLE
Level 3 BTEC Extended Certificate in Travel and Tourism

EXAM BOARD
Pearson



Why Should I Study Travel and Tourism?

This qualification is designed to support learners who are interested in learning about the travel and tourism industry alongside other fields of study, with a view to progressing to a wide range of higher education courses, not necessarily in travel and tourism-related subjects.

In this course, you will gain knowledge of the different components of the Travel and Tourism industry as well as the different needs and destinations of different customers/travellers.



T-LEVEL COURSES

50 | Business & Administration

51 | Education & Childcare

WHAT IS A T-LEVEL?

Last year we successfully launched our first T-Level in Education & Childcare and currently have students who spend three days a week on-site in our bespoke classroom and two days a week at various placements ranging from nurseries to primary schools. This year, we are extending our T-Level provision to include Business & Administration to this list.

T-levels are a new, government-backed and employer driven, career focused qualification. They are equivalent to three A-levels and have the same UCAS points for university applications that traditional A-Levels have.

Both of the courses that we offer (Education & Childcare and Business & Administration) are studied for two years with students studying on-site for 3-4 days a week and then applying their taught knowledge 1-2 days a week, depending on where they are in the course. There will also be weeks where they complete a whole week on placement. The courses are designed to prepare learners for the world of work, or further study such as a higher-level apprenticeship or university.



BUSINESS & ADMINISTRATION

COURSE IS EQUIVALENT TO
Three A Levels

COURSE TITLE
T Level in Business: Management and Administration

EXAM BOARD
City and Guilds

Why Should I Study for a T-level in Business & Administration?

The T-Level in Management and Administration is an exciting new 2-year programme developed in collaboration with employers and businesses. The content of the course meets the needs of industry and prepares you for work. This programme is the equivalent of 3 A Levels and mixes classroom learning with 'on-the-job' experience in a high-quality industrial placement for a minimum of 315 hours. You will complete the course with a technical qualification, setting you up for the world of work.

The core content focuses on the knowledge and understanding of business concepts and theories, supporting you to gain the transferable and core skills you will require within the business and management sector.

WHAT SKILLS CAN I GAIN?

The qualification will help you gain an understanding of the Management and Administration sector, and you will cover topics such as: Business Context, People, Quality Compliance, Project, and Change Management.

- Problem cause identification.
- Data analysis.
- Project planning and management.
- Development, tracking and reporting of budgets.

This qualification will suit someone who is not yet employed or looking to enter the Management and Administration sector post mainstream education. The structure of the qualification is designed to give learners the breadth of knowledge and understanding across the Management and Administration sector but also equips them with necessary occupational and core skills to enter the sector. This qualification is designed to support fair access and allows students to manage and improve their own performance.

WHAT CAREER PATHS WOULD THIS COURSE BE SUITABLE FOR?

Team Leader/ Supervisor	Payroll Operative
Middle Manager	Data Entry Clerk
Project Manager	Director
Office Manager	Entrepreneur/Business Owner
Administrative Assistant	

WHAT WILL I LEARN WHILST STUDYING?

You will develop your knowledge and understanding in the following core areas:

- Business context
- People
- Quality & compliance
- Finance
- Policies & procedures
- Project & change management
- Business behaviours

You will have the opportunity to specialise in the following areas:

- Business improvement
- Team leadership/ management
- Business support
- Information management

HOW WILL I BE ASSESSED?

The City and Guilds T-Level in Management and Administration core content is assessed through an examination and a substantial practical employer set project. The occupational specialism is assessed synoptically through rigorous practical assessments.

WHAT ARE THE ENTRY REQUIREMENTS?

REQUIRED APS

4.8

SPECIFIC REQUIREMENTS

Minimum Grade 5 in English and Maths



WHAT SKILLS CAN I GAIN?

- Understanding the education and childcare sector from ages 0 to 19
- How to support children and young people's education
- Child development
- Special educational needs and disability
- Working with parents, carers, families, agencies, and support services

WHAT CAREER PATHS WOULD THIS COURSE BE SUITABLE FOR?

This technical qualification will support students in a range of progression routes, including employment and apprenticeships in the following careers:

- Early Years Practitioner
- Early Years Educator
- Education Technician
- Primary or Secondary Teaching and Support Assistant
- Nursery Nurse

WHAT WILL I LEARN WHILST STUDYING?

The course consists of a core component and occupational specialism in Early Years Educator. The core component includes:

- Wider context
- Supporting education
- Safeguarding, health and safety and wellbeing
- Behaviour
- Parents, families and carers
- Working with others
- Child development
- Observation and assessment
- Reflective practice
- Equality and diversity
- Special educational needs and disability
- English as an additional language

The Early Years Educator specialism includes:

- Support and promote children's play, development and early education
- Develop relationships with children to facilitate their development
- Plan, provide and review care, play and educational opportunities to enable children to progress
- Safeguard and promote the health, safety and wellbeing of children
- Work in partnership with colleagues, parents, carers and other professionals to support children's development

HOW WILL I BE ASSESSED?

- 2 written examinations
- Employer Set Project (ESP)
- Synoptic assignments

WHAT ARE THE ENTRY REQUIREMENTS?

REQUIRED APS

4.8

SPECIFIC REQUIREMENTS

Minimum Grade 5 in English and Maths and a 4 in Science.



COURSE IS EQUIVALENT TO
Three A Levels

COURSE TITLE
T Level in Education and Childcare

EXAM BOARD
NCFE

Why Should I Study Education & Childcare?

Equivalent to 3 A-Levels, the 2-year course has been developed in collaboration with employers and businesses to ensure the content prepares learners for the world of work and meets industry needs.

The purpose of the T-Level Technical Qualification in Education and Childcare is to ensure students have the knowledge and skills needed to progress into skilled employment or higher-level technical training relevant to the T-Level.



BASKETBALL ACADEMY

In partnership with the Tamworth Tigers

- Highly Qualified Coaches
- State-of-the-Art Facilities
- Competitive Fixtures:
- Personalised Training
- Conditioning programme
- International Camps



Next generation Football Academy is delivered by our full time UEFA qualified Coaching team and the course will include:

- One competitive fixture per week
- National Futsal competition
- Free Nike training and match kit

Work experience support
Additional qualifications include:

- FA Talent Identification Course
- FA Playmaker Course
- FA Level 1 coaching qualification



FOOTBALL ACADEMY



ADDITIONAL QUALIFICATIONS

54 | Extended Project Qualification (EPQ)

55 | Core Maths (Maths in Context)



EXTENDED PROJECT QUALIFICATION (EPQ)

COURSE IS EQUIVALENT TO

One AS Level (half an A-Level). The course is completed in one academic year and carries UCAS points for most university applications.

COURSE TITLE

Extended Project Qualification

EXAM BOARD

Edexcel

Why Should I Study Extended Project Qualification?

The EPQ is an opportunity to undertake a project investigating a subject about which you feel strongly. You may choose a topic related to your future pathway or take the opportunity to follow a personal passion. It provides a context for critical thinking and project management skills.

What does it involve?

You choose your area of study in negotiation with a supervisor and submit it for formal approval. You identify and draft your main aims and objectives before planning, researching and delivering your project. The process is recorded in an activity log, which is submitted with your final project. You will have to obtain and select information from a wide range of different sources, analyse your data and show that you understand the complexities of the topic you have chosen.

WHAT SKILLS CAN I GAIN?

- Formulating aims and objectives
- Planning a project
- Taking notes and record-keeping
- Assessing the reliability and validity of sources
- Critical thinking
- Research methodology
- Referencing and plagiarism
- Decision making
- Meeting deadlines
- Presentation skills, including how to handle a question and answer session
- Evaluating the project and your own strengths and weaknesses

WHAT CAREER PATHS WOULD THIS COURSE BE SUITABLE FOR?

Being successful in EPQ is likely to enhance your application to University. It will help you stand out from other students, both in your personal statement and in an interview.

WHAT WILL I LEARN WHILST STUDYING?

Completing the EPQ will help you develop your own organisational, project management and independent learning skills. These will help you become a more

HOW WILL I BE ASSESSED?

Every student has an activity log to complete as a documented journey of their project. The evidence of your project is likely to be a 6,000-word written report. Near the end of your project, you will make a presentation of your research, to an audience and you will be expected to answer questions.

WHAT ARE THE ENTRY REQUIREMENTS?

SPECIFIC REQUIREMENTS

Minimum 4 in English Language



MATHEMATICS IN CONTEXT (CORE MATHEMATICS)

WHAT SKILLS CAN I GAIN?

Studying maths develops your numeracy, graphical and problem-solving skills. These skills are really useful preparation for the maths used in many university degree courses, higher apprenticeships, and the workplace.

It can also increase your confidence and fluency in the maths used in everyday life.

WHAT CAREER PATHS WOULD THIS COURSE BE SUITABLE FOR?

Maths beyond GCSE is highly regarded by employers and universities. They are often required or recommended, and may lead to reduced offers for entry to university and degree apprenticeship programmes, even for subjects that don't have a large amount of mathematical content.

Some careers include Business, Sciences, Psychology, Health and Social Care, Technical Careers such as engineering, Construction, Sports Science, Geography and many more.

WHAT WILL I LEARN WHILST STUDYING?

You'll learn some new topics, but it mostly involves maths you'll have already used for your GCSE.

Where it differs is its focus on developing the skills you need to apply maths to the kinds of real-life problems you'll meet in study, work and life.

HOW WILL I BE ASSESSED?

Core Maths is assessed entirely by exam for which you will take two written papers – so there is no coursework.

WHAT ARE THE ENTRY REQUIREMENTS?

SPECIFIC REQUIREMENTS

Minimum Grade 5 in Maths and Grade 4 in English Language.



COURSE IS EQUIVALENT TO

One AS Level (half an A-Level). The course is completed in one academic year and carries UCAS points for most university applications.

COURSE TITLE

Mathematics in Context

EXAM BOARD

Edexcel

Why Should I Study Core Maths

Mathematics in Context is a course intended for students who are keen to extend their GCSE Maths skills for a future study or work, but are not planning on taking Mathematics at A level.

If you are planning to study subjects such as Science, Geography, Business, Chemistry, Computer Science or Psychology at A level, or a vocational qualification, or are planning to take an apprenticeship or move into employment, Mathematics in Context will be useful to help refine and develop your maths skills.

A STRONG SUPPORT NETWORK

Sixth Form is a challenging but ultimately rewarding journey and our academic successes would not be possible without the strong support network that is available to students.

We have a range of pastoral support available to our students. This includes:

- A full-time, professionally qualified counsellor
- A full-time independent careers advisor
- A team of mental health officers to support student wellbeing
- A team of highly-trained student support officers
- A team of Learning Support Assistants to support students academically

All of our students receive a fortnightly 10-15 minute one-to-one academic coaching session. During this time, a personal tutor (usually linked to the student's subject areas) will meet with the student to discuss their academic successes and wellbeing. The session follows the bespoke programme of 'reflect', 'support', and 'challenge'. The sessions are popular amongst students and are a good example of the individualised support that is given to every student at Tamworth Sixth Form

Additionally, all of our students will themselves leave with a formal Level 1 Safeguarding qualification.

Within our campus, students have supervised access to the on-site gym, swimming pool and sports facilities as well as a plethora of extra-curricular clubs and opportunities including trips abroad and visits to university settings.



WE PREPARE AND EMPOWER

We believe there is much more to Sixth Form life than simply the academic outcomes that students achieve. Our responsibility is to ensure that students are prepared and empowered to successfully approach their next steps after they leave us. Our Personal Development Programme enables students to take ownership of their own aspirations and ambitions

The Tamworth Sixth Form Charter is designed to ensure that all students leave us as well-rounded, educated, thoughtful and highly-skilled individuals. It incorporates the four key strands of '**Academic Excellence**', '**Employability Gains**', '**Personal Development**' and '**Mindful Consideration**.' As a result of this programme, students leave us at the end of Year 13 with a comprehensive awareness of **first-aid (including CPR)**, **personal finance** and **strong academic experiences**. Additionally, we support students with preparation for their **driving theory tests** and all our students undergo **Level 1 Safeguarding** training so that they are able to work outside of Tamworth Sixth Form in settings with under 16s. We develop the individual and students are given a wide range of opportunities to flourish to make them more desirable to their next destination and the challenges of university, higher level apprenticeships or employment.





Landau Forte Academy Tamworth Sixth Form
Ashby Road
Tamworth
B79 8AA

T: 01827 301820

E: post@lfatsf.org.uk

W: lfatsf.org.uk



SCAN HERE
TO VISIT
OUR
WEBSITE

